

SENSORS & SOFTWARE®
from RADIODETECTION



PROMAT



LMX100™

Utility locating with GPR made simple

Trying to avoid dangerous and costly hits
to critical utilities?

Want to find more utilities at your job site?

Non-metallic utilities without tracer wires
giving you trouble?

If so, then LMX100™ is the right GPR for you.

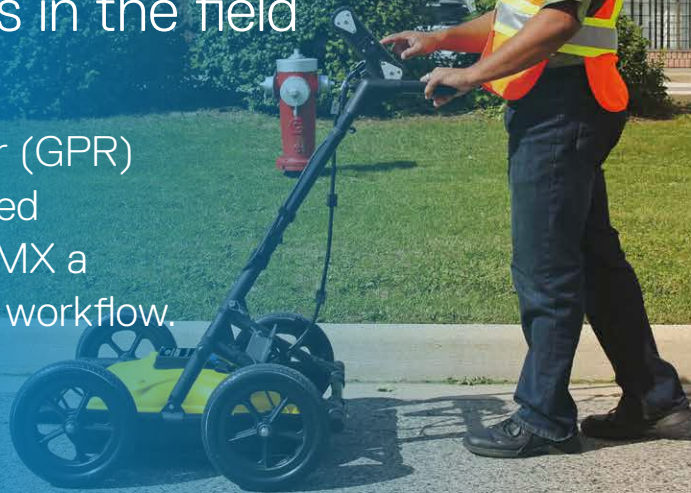


SPX

LMX100™ overview

The simple, efficient way to
Locate & Mark™ utilities in the field

LMX® Ground Penetrating Radar (GPR) systems are designed & optimized for utility locating, making the LMX a natural addition to your locating workflow.



LMX GPR systems complement traditional pipe and cable locators and allow you to Locate & Mark:

- Metal utilities, including pipes and cables
- Non-metallic pipes, including PVC and asbestos cement
- Concrete storm and sewer systems
- Utilities where installed tracer wiring has failed
- Underground storage tanks and drainage tiles
- Septic system components
- Non-utility structures such as vaults, foundation walls and concrete pads



LMX100 features

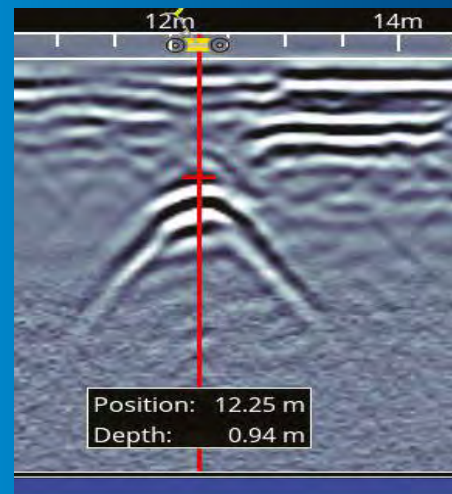
Rapidly locate **metallic**
and **non-metallic** utilities

Enhance your productivity

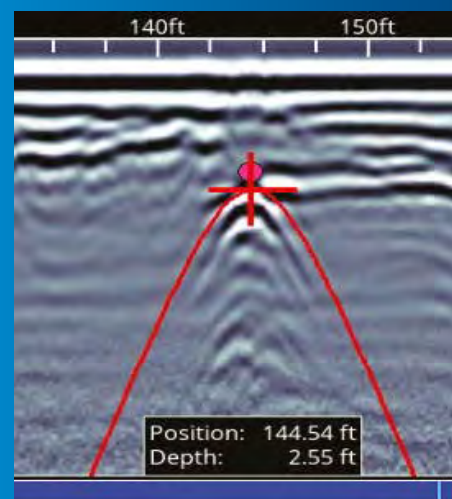
No complex settings – Just press Start and push the cart



Pinpoint Depth & Location



Easy Depth Calibration



Use hyperbola-fitting to ensure accurate depth measurements and backup over the target to display its location and depth.

Dynamic Stacking (DynaQ®)

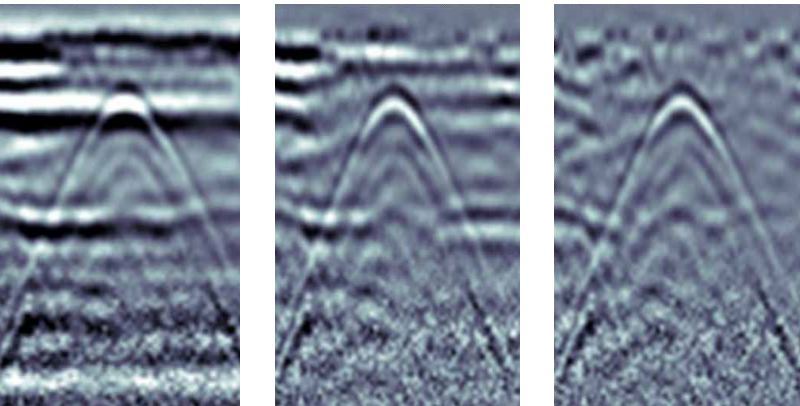


Better data quality with DynaQ. The LMX automatically adjusts stacking (averaging) based on your survey speed.

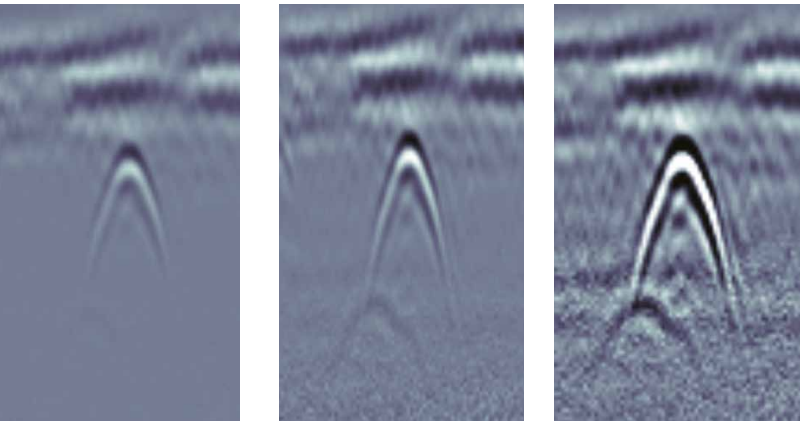
- White = No data (too fast!)
- Yellow = Moderate quality
- Light blue = Better quality
- Dark blue = Highest quality

Increase your target confidence in the field with image optimization

Preset Filters

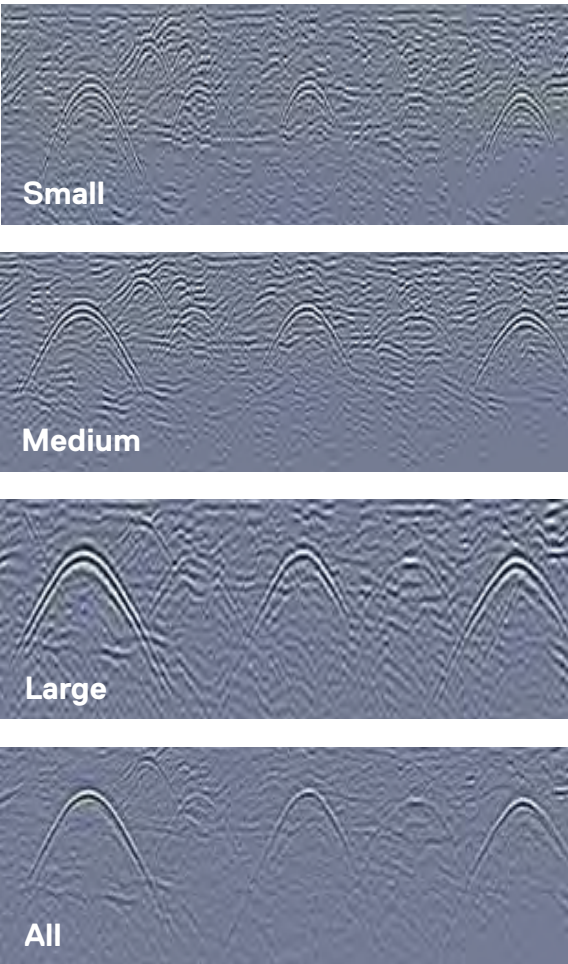


Adjustable Gain



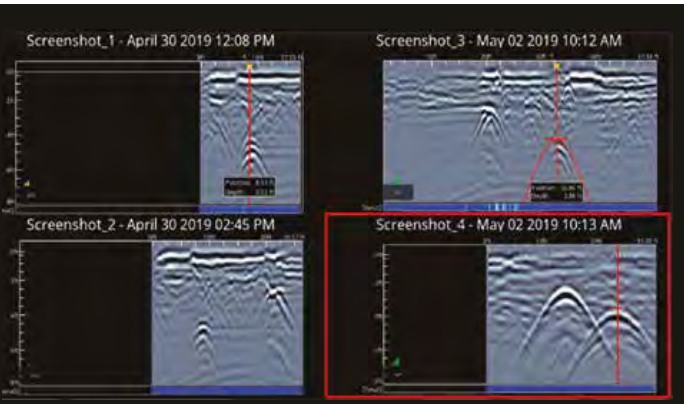
Optimize visibility of your targets with preset filters & gain.

Dynamic Target Enhancement (DynaT™)



Enhance small, medium & large targets.

Get faster deliverables



In-field Screenshot Gallery & Wi-Fi mini-reports

Manage & review your screenshots and email them in a Wi-Fi mini-report from the field to share key collection information and images.



Geo-tagged information for reports & archiving

All screenshots are geo-tagged and exported in a KMZ file that is easily displayed in Google Earth.™

High visibility touch screen display unit

- Free lifetime system software updates
- User selectable languages
- US Standard and Metric units

On-site Reports

- Produce instant on-site reports from your display unit

USB

- USB for easy data transfer

Integrated GPS

- Integrated GPS receiver for geo-referencing data

Wi-Fi

- Built-in Wi-Fi capability

GPR Sensor

- Patented ultra-wideband (UWB) 250 MHz GPR antenna
- DynaT for Dynamic Target enhancement
- Offers perfect balance of depth penetration (up to 8 m/26 ft) & high resolution

Lightweight Fiberglass Cart Frame

- No metal parts that would interfere with GPR signals
- Rugged, maneuverable, all-terrain cart

Lead Acid Gel Cell Battery

- Long lasting
- Swappable
- Locally available

Odometer

- To collect data at equal intervals

| Weight & Dimensions | |
|---|----------------------------------|
| Size: 100 x 70 x 115 cm (39.4 x 27.6 x 45.3 in) | |
| Weight: 22 kg (48 lbs) | |
| Display Unit size: 21 cm (8 in) diagonal | |
| Power | |
| 12 volt sealed lead acid gel cell | |
| Battery Capacity: 9.0 Ah | Battery Weight: 3.6 kg (7.9 lbs) |
| Battery Life: 4-6 hours | Charger: 110-240V |

| Environmental & Temperatures | |
|---|---|
| Ruggedized, environmentally sealed unit and connections | |
| IP65 | Operating temperature range: -40°C to +50°C (-104°F to 122°F) |
| Regulatory Specifications | |
| Meets FCC 15.509, IC RSS-220 and ETSI EN-302066 | |
| Data Storage | Depth |
| 10,000+ screenshots | Up to 8 meters (25 feet) |

Useful resources to make the most of your LMX:

- [LMX100 training videos](#)
- [Utility Locating with GPR \(Nulca-accredited\) interactive and online course \(SensoftU.com\)](#)
- [Webinars and free online resources](#)
- [Learn more about our training offerings](#)