

SENSORS & SOFTWARE® 
from **RADIODETECTION**

PROMAT



LMX200™

Utility locating with GPR made simple

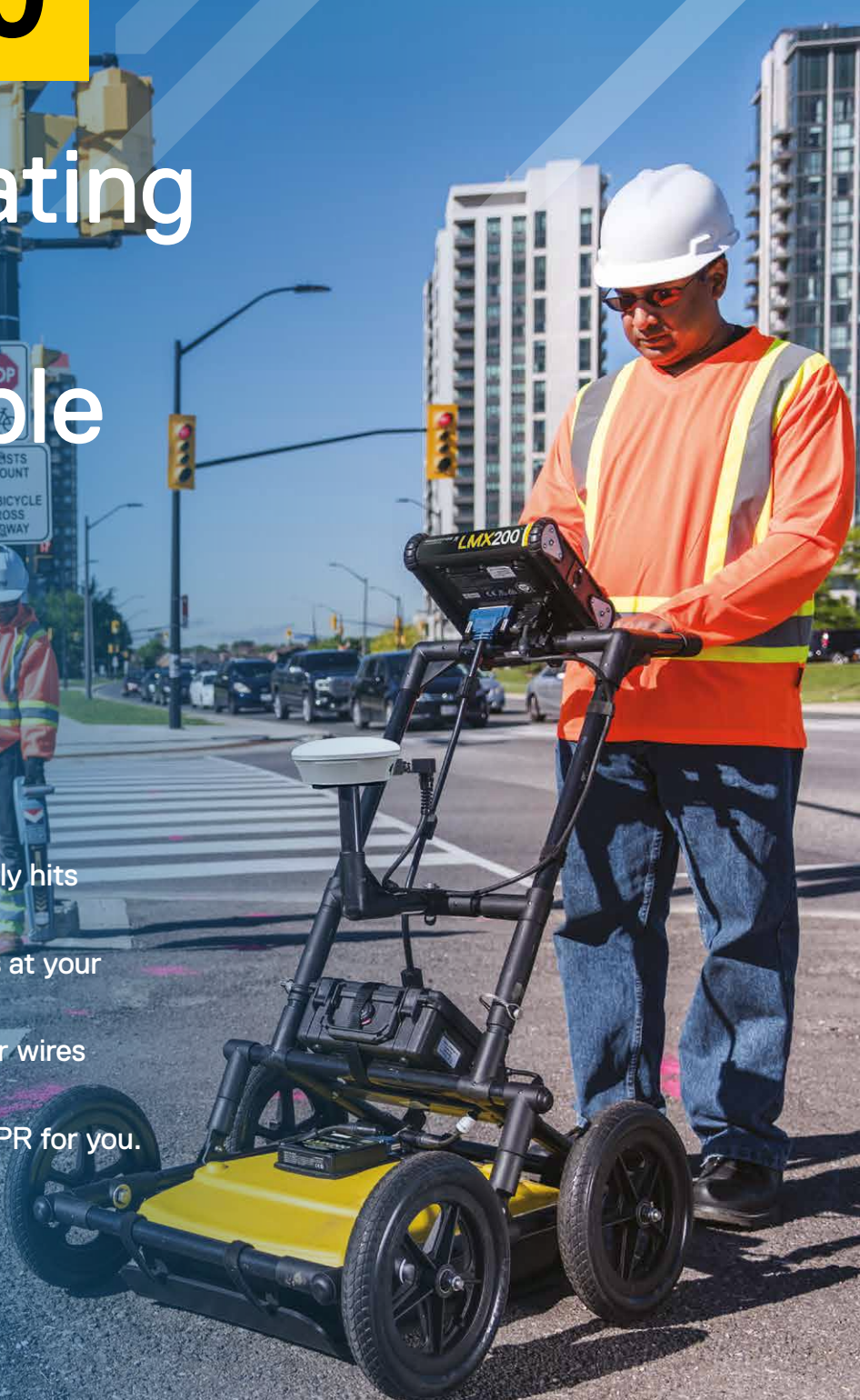
Trying to avoid dangerous and costly hits
to critical utilities?

Want to find and map more utilities at your
job site?

Non-metallic utilities without tracer wires
giving you trouble?

If so, then LMX200™ is the right GPR for you.

SPX 



Overview

LMX200™ GPR complements traditional pipe and cable locators and allows you to locate and map targets below the surface.

- Metal utilities, including pipes and cables
- Non-metallic pipes, including PVC and asbestos cement
- Concrete storm and sewer systems
- Utilities where installed tracer wiring has failed
- Underground storage tanks and drainage tiles
- Septic system components
- Non-utility structures such as vaults, foundation walls and concrete pads



- High visibility touch screen display unit**
 - Free lifetime system software updates
 - User selectable languages
 - US Standard and Metric units
- On-site Reports**
 - Produce instant on-site reports from your display unit
- USB**
 - USB for easy data transfer
- Integrated GPS**
 - Integrated GPS receiver for geo-referencing data
- Wi-Fi**
 - Built-in Wi-Fi capability
- GPR Sensor**
 - Patented ultra-wideband (UWB) 250 MHz GPR antenna
 - DynaT™ for Dynamic Target enhancement
 - Offers perfect balance of depth penetration (up to 8 m/26 ft) & high resolution

- Lightweight Fiberglass Cart Frame**
 - No metal parts that would interfere with GPR signals
 - Rugged, all-terrain cart with integrated odometer, easily maneuverable over any surface
- Optional External GPS**
 - For high accuracy positioning and mapping
- Lead Acid Gel Cell Battery**
 - Long lasting
 - Swappable
 - Locally available
- Odometer**
 - To collect data at equal intervals

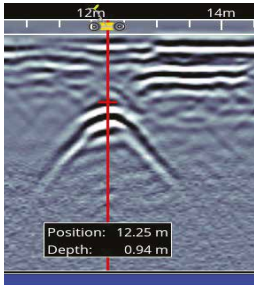


LMX200 features

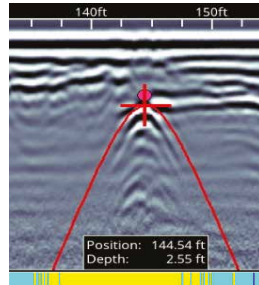
Rapidly locate metallic and non-metallic utilities

Enhance your productivity

Pinpoint Depth & Location

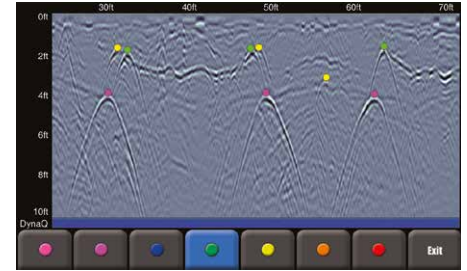


Easy Depth Calibration



No complex settings – Just press Start and push the cart.
Use hyperbola-fitting to ensure accurate depth measurements and backup over the target to display its location and depth.

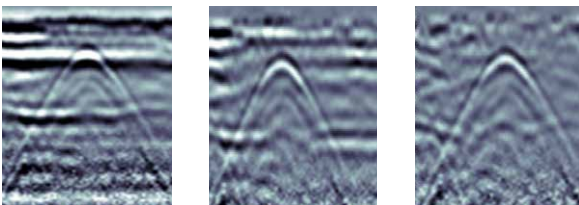
Color-coded field interpretations



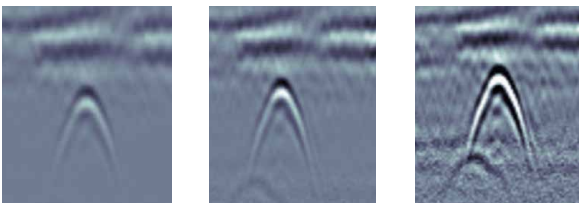
Classify your targets in real-time by selecting a color option and touching the screen.

Increase your target confidence in the field with image optimization

Preset Filters

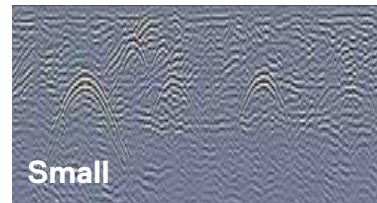


Adjustable Gain

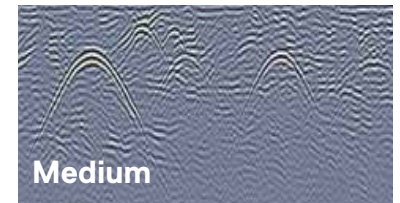


Optimize visibility of your targets with preset filters & gain.

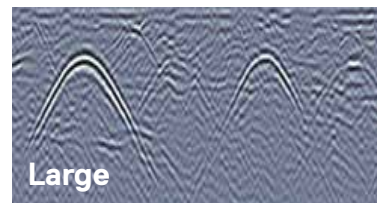
Dynamic Target Enhancement (DynaT)



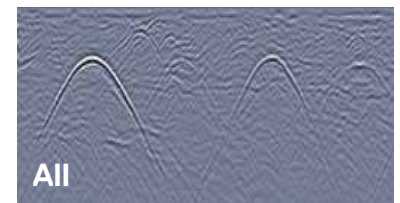
Small



Medium



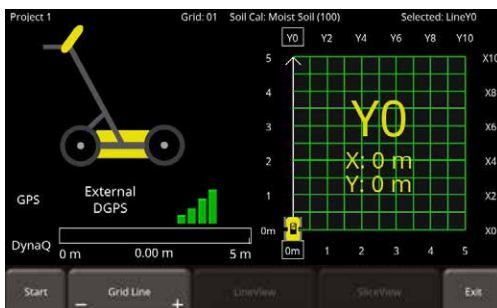
Large



All

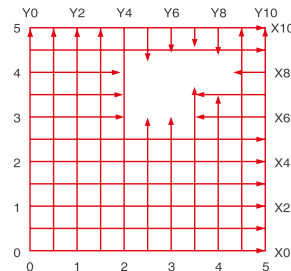
Enhance small, medium & large targets.

Grids & Depth Slices



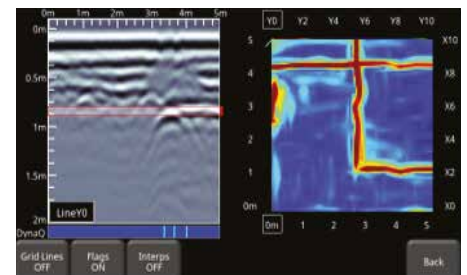
Flexible & guided grid collection

The LMX200 guides you through setup with pre-selected grid sizes. Stop lines early, or skip lines.



Obstacle avoidance

System guides data collection around an obstacle in your grid.



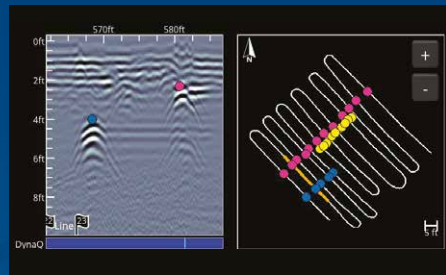
In-field Depth slices

Process grid data into depth slices and move down through your data to visualize targets at different depths. Depth Slice through multiple grids on-site.

PROMAT

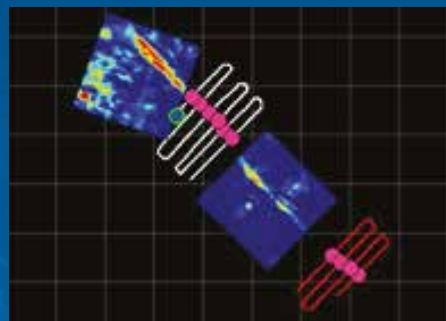
LMX200

Features unlocked with external GPS



SplitView – Real-time MapView during data collection

- Ensure full site coverage by visualizing your survey path
- See interpretations as you add them
- Review data for subtle targets that you may have missed
- Know your location, and go back to areas of interest



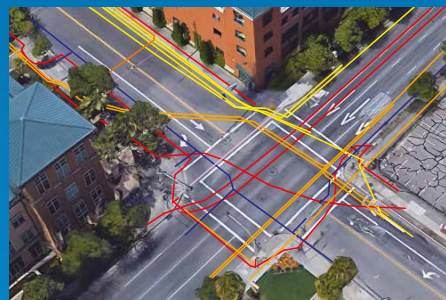
Visualize your entire survey in MapView

- See your survey path, depth slices, field interpretations and flags
- Slice through all depth slices simultaneously
- Toggle layers on and off to focus on elements of interest

Export geo-referenced data

	A	B	C	D	E	F
1	Tool	Position (m)	Depth (m)	Latitude	Longitude	GPS-Elevation
2	Point	0.72	0.18	38.8345202	-9.1821844	16.63
3	Point	0.83	0.7	38.8345201	-9.1821826	16.6
4	Point	1.12	0.75	38.8345187	-9.1821798	16.59
5	Point	1.63	0.19	38.8345172	-9.1821759	16.56
6	Point	1.63	0.68	38.8345172	-9.1821759	16.56

Spreadsheet (.CSV) file with flags and interpretations



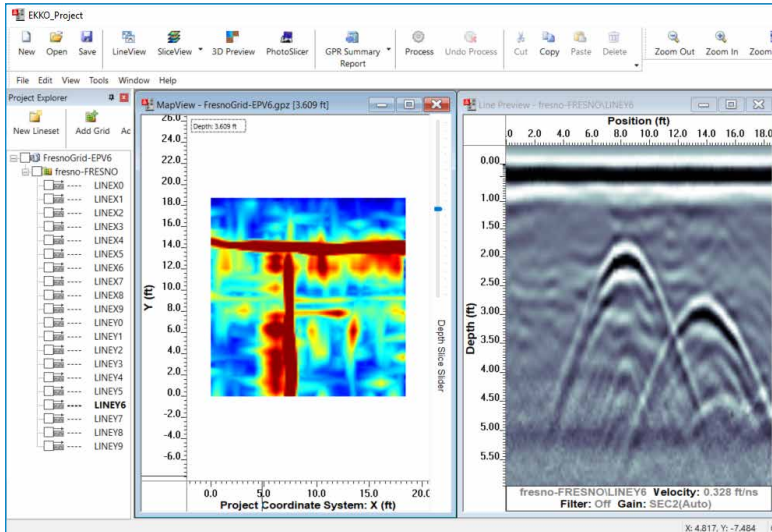
KMZ output of lines, grid locations, interpretations, and screenshots





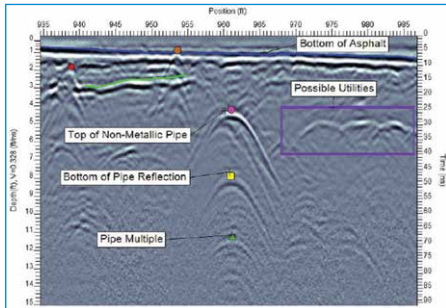
EKKO_Project™ Software

Visualize, Understand and Report your GPR results with the optional EKKO_Project PC Software

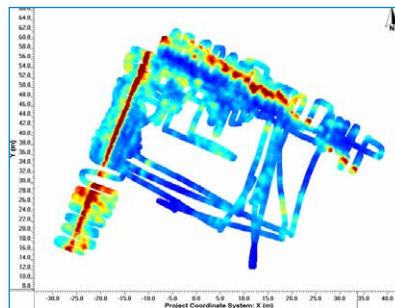


Core

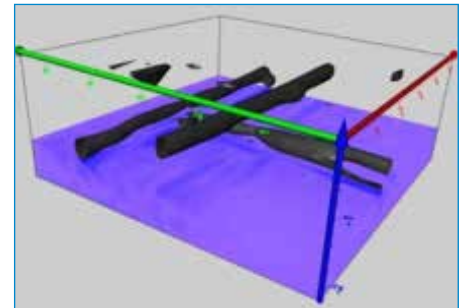
Organize your GPR data, photos and other files and save as a single project file. Easily create PDF reports of your findings.



Examine (Cross-sections)



Reveal (Depth Slices)



3D Reveal (3D Visualization)

Weight & Dimensions	
Size: 100 x 70 x 115 cm (39.4 x 27.6 x 45.3 in)	
Weight: 22 kg (48 lbs)	
Display Unit size: 21 cm (8 in) diagonal	
Power	
12 volt sealed lead acid gel cell	
Battery Capacity: 9.0 Ah	Battery Weight: 3.6 kg (7.9 lbs)
Battery Life: 4-6 hours	Charger: 110-240V

Environmental & Temperatures	
Ruggedized, environmentally sealed unit and connections	
IP65	Operating temperature range: -40°C to +50°C (-104°F to 122°F)
Regulatory Specifications	
Meets FCC 15.509, IC RSS-220 and ETSI EN-302066	
Data Storage	Depth
380 km (236 miles) of data	Up to 8 meters (26 feet)

Useful resources to make the most of your LMX:

- [LMX200 training videos](#)
- [Utility Locating with GPR \(Nulca-accredited\) interactive and online course \(SensoftU.com\)](#)
- [Webinars and free online resources](#)
- [Learn more about our training offerings](#)