



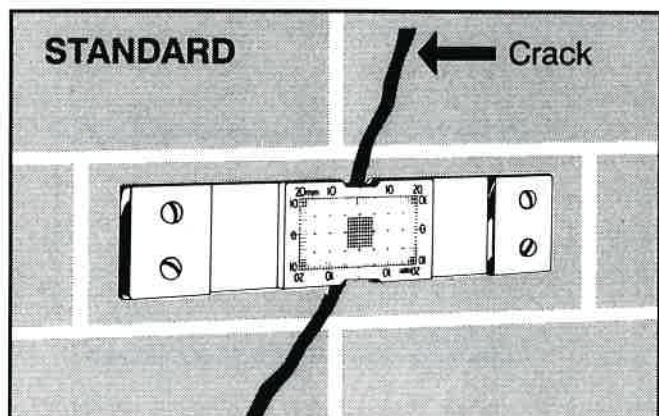
PROMAT

TELL-TALE CRACK MONITORS

TELL-TALES consist of two plates which overlap for part of their length. One plate is calibrated in millimeters and the overlapping plate is transparent and marked with a hairline cursor.

As the crack width opens or closes, one plate moves relative to the other. The relationship of the cursor to the scale represents the amount of movement occurring.

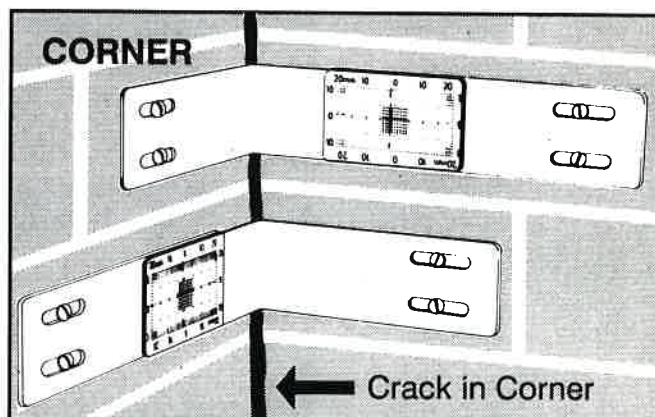
Range $\pm 20\text{mm}$ – Resolution 1mm



The Standard TELL-TALE is produced in durable acrylic plastic and is used for monitoring movement across cracks in vertical and horizontal directions.

Re-order Code TT1

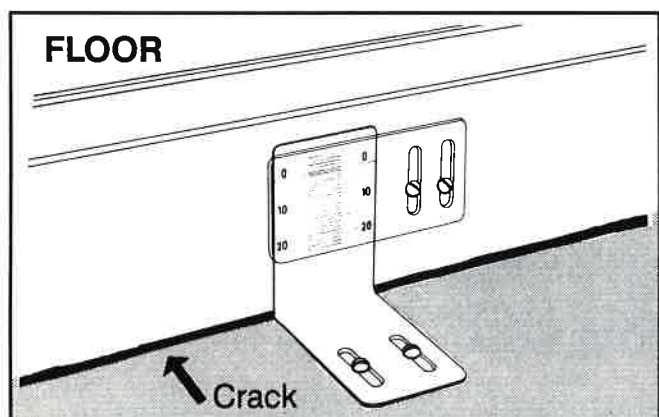
Linear coefficient of thermal expansion: $6.5\text{cm}/\text{cm}^\circ\text{C} \times 10^{-5}$



The Corner TELL-TALE is produced in PVC rigid sheet and is used for monitoring movement across cracks in corners in vertical and horizontal directions.

Re-order Code TT2

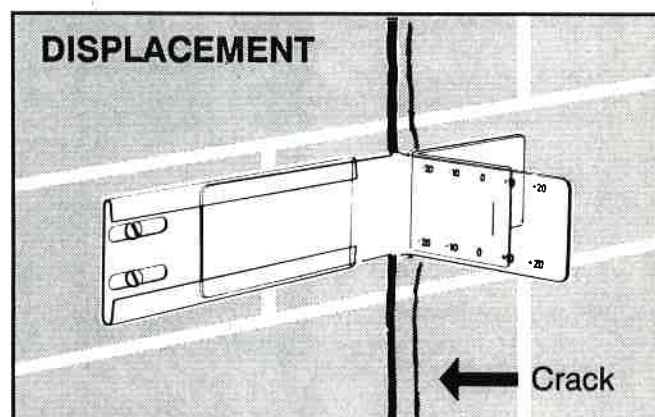
Linear coefficient of thermal expansion: $6.5\text{cm}/\text{cm}^\circ\text{C} \times 10^{-5}$



The Floor TELL-TALE is produced in PVC rigid sheet and is used for monitoring settlement of floors relative to a wall, column, etc.

Re-order Code TT3

Linear coefficient of thermal expansion: $6.5\text{cm}/\text{cm}^\circ\text{C} \times 10^{-5}$



The Displacement TELL-TALE is produced in PVC rigid sheet and is used for monitoring movement across cracks when one surface moves out of plane with the other. The TELL-TALE monitors out of plane movement.

Re-order Code TT4

Linear coefficient of thermal expansion: $7.3\text{cm}/\text{cm}^\circ\text{C} \times 10^{-5}$

PROMAT (HK) Limited 寶時 (香港) 有限公司

☎ : 2661 2392 ☎ : 5196 8860 ✉ : info@promat.hk 🌐 : http://www.promat.hk

