

**A FEW PRACTICAL BENEFITS:**

Measuring devices designed and produced according to the highest quality standards in Germany

German industrial design in robust, premium two-component construction with IP54 type of protection

Continuous easy-to-clean glass surface made of highly scratch-resistant Blanview special glass for a high-contrast display of measured values even in the sunlight

Capacitive touchscreen control panel

High-resolution colour display for simultaneous indication of two measured values

Moisture alarm function

Material pre-selection for anhydrite and cementitious screed (T660 only)

Direct display of measured values possible in mass % or CM % (T660 only)

Grid measurement function via USB with active software connection

Incl. MultiMeasure Studio measurement data management software (standard download version)

# Material moisture measuring devices T610 and T660



**Brilliant large-digit display**

Both measuring devices come equipped with particular display glass ensuring high-contrast presentation even in bright sunlight as well as enabling the quick and reliable detection of the moisture distribution in wall or floor areas when combined with the large-digit, real-time measurement value display.

**Material moisture measuring device T610**

**Specifically designed for quick, non-destructive sub-surface measurements.**

Using the T610, the microwave technology not only allows the detection of moisture distributions to a depth of up to 300 mm, moreover, the method works regardless of the salinity degree of the material. For the microwave method it is, therefore, irrelevant whether an older or a new building is inspected.

**Material moisture measuring device T660**

**Ideal for the quick and non-destructive determination of near-surface moisture distributions to up to 4 cm.**

Based on the T660's integrated material pre-selection function for anhydrite and cementitious screed the measurement results (indicative) can on demand be shown directly in mass % or CM % on the colour display of the T660.

The integrated conversion of measured values is a practical tool, in particular for floor layers to quickly check the readiness for covering.

In addition to the preliminary check of the building materials' readiness for covering for CM measurements the T660 is also suited for non-destructive wood moisture measurements according to the dielectric measurement method (indicative).

**Integrated alarm function**

Handy and time-saving: Prior to measuring, an individual limit value can be defined for both devices. Should this alarm limit value be exceeded in the course of measuring, an acoustic warning signal is emitted automatically!

This way, large wall and floor areas can be measured quickly and effectively.

During measuring, the user can focus exclusively on the measuring object without the need to permanently keep an eye on the displayed measuring results.



T610 and T660 come with a continuous surface made of highly scratch-resistant Blanview special glass and capacitive touchscreen control panel.

**Finally one software for basically all measuring devices:**

**MultiMeasure Studio Professional**

Not only ideally suited for fully compatible measuring devices such as the T610 or the T660, but also usable with many partially compatible devices – even owners of isolated external devices can benefit from this software, for it enables the analysis and administration of all measuring projects and customer data across multiple devices in a single application!

Using the unique report generating function you can create professional reports in a trice: Numerous boilerplate texts for building diagnostics, moisture measurement, leak detection and thermography are already included completely formulated.

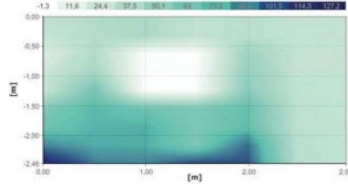
*Further information regarding the professional version can be found starting on catalogue page 48...*

**Also ideally suited for combined building diagnostics measurements**

The material moisture measuring devices T610 and T660 individually can not only splendidly be used for the non-destructive moisture measurement in building materials, walls, ceilings or floors, but in joint application also facilitate additional examination options:

Through combined surface and sub-surface moisture measurement complex correlations can be distinguished, narrowed down and classified as well, e.g. hygroscopic humidity occurrences resulting from salinization or leak detec-

tion. In the course of this the T660 captures the topmost two to four cm of the construction material and the T610 measures the volume moisture values to a depth of 30 cm.



Significant results regarding a multi-dimensional moisture distribution can be obtained via grid measurement based on surface and sub-surface moisture measurement values. With an active USB connection to the measuring device the Multi-Measure Studio software included in the scope of delivery provides a convenient assistance function for the creation and visualization of grid measurements.

*Further information – also regarding this software’s professional version – can be found starting on page 48...*



| Technical data                   |                                       | T610                                                                                                                                                                                                                                         | T660                                                                                                                   |
|----------------------------------|---------------------------------------|----------------------------------------------------------------------------------------------------------------------------------------------------------------------------------------------------------------------------------------------|------------------------------------------------------------------------------------------------------------------------|
| Article no.                      |                                       | 3.510.207.600                                                                                                                                                                                                                                | 3.510.207.650                                                                                                          |
| Material moisture                | Ascertainable measured values         | Sub-surface moisture (digits)                                                                                                                                                                                                                | Near-surface moisture (digits, mass %, CM %)                                                                           |
|                                  | Measuring principle                   | Microwave                                                                                                                                                                                                                                    | Dielectric                                                                                                             |
|                                  | Measuring range                       | 0 to 200 digits                                                                                                                                                                                                                              | 0 to 200 digits, anhydrite screed: 0 to 7.3 mass %, 0 to 7.3 CM %; cementitious screed: 0 to 7.6 mass %, 0 to 5.5 CM % |
|                                  | Accuracy                              | 0.1 digits                                                                                                                                                                                                                                   | 0.1 digits                                                                                                             |
|                                  | Resolution                            | 0.1 digits                                                                                                                                                                                                                                   | 0.1 digits                                                                                                             |
|                                  | Penetration depth                     | up to 300 mm                                                                                                                                                                                                                                 | up to 40 mm                                                                                                            |
| Functions                        | Measuring functions                   | Measurement of real value, minimum, maximum and average value; display value hold function                                                                                                                                                   |                                                                                                                        |
|                                  | Adjustment functions                  | Offset adjustment for digit measurements, variable display illumination with dimmer function, automatic switch-off, key lock, measured value storage <sup>1)</sup> ; T660 only: material pre-selection for anhydrite and cementitious screed |                                                                                                                        |
|                                  | Alarm function                        | ■                                                                                                                                                                                                                                            | ■                                                                                                                      |
| Power supply                     | Internal                              | 4 x 1.5 V, type AA, IEC LR06; or comparable NIMH rechargeable batteries (> 2500 mAh)                                                                                                                                                         |                                                                                                                        |
|                                  | External                              | USB                                                                                                                                                                                                                                          |                                                                                                                        |
| General technical specifications | Display                               | High-resolution colour display for simultaneous indication of two measured values                                                                                                                                                            |                                                                                                                        |
|                                  | Control                               | Capacitive touchscreen with cross control                                                                                                                                                                                                    |                                                                                                                        |
|                                  | Front glass (display and touchscreen) | Highly scratch-resistant “Blanview” special glass for high-contrast display even in the sunlight; chemically hardened, degree of hardness 7                                                                                                  |                                                                                                                        |
|                                  | Housing protection type               | IP54                                                                                                                                                                                                                                         |                                                                                                                        |
|                                  | Interfaces                            | USB                                                                                                                                                                                                                                          |                                                                                                                        |
|                                  | Operating conditions                  | 0 to +50 °C, < 90 % RH <sup>2)</sup>                                                                                                                                                                                                         |                                                                                                                        |
|                                  | Storage conditions                    | -10 to +60 °C, < 95 % RH <sup>2)</sup>                                                                                                                                                                                                       |                                                                                                                        |
|                                  | Dimensions (L x W x H)                | 191 x 65 x 65 mm                                                                                                                                                                                                                             | 209 x 63 x 35 mm                                                                                                       |
|                                  | Weight (incl. batteries)              | 425 g                                                                                                                                                                                                                                        | 285 g                                                                                                                  |
| Scope of delivery                | Standard                              | Measuring device, screen protective film, silicone cover, USB cable, batteries, Getting started guide, factory test certificate, MultiMeasure Studio Standard PC software (download)                                                         |                                                                                                                        |
|                                  | Optional                              | Screen protective film (Art. no. 3.510.200.220), Silicone cover (Art. no. 7.330.000.065), holster 3 bag (Art. no. 3.510.200.228), PC software MultiMeasure Studio Professional (Art. no. 3.510.204.010)                                      |                                                                                                                        |

■ Standard equipment; <sup>1</sup> only in combination with the “MultiMeasure Studio” software; <sup>2</sup> non-condensing