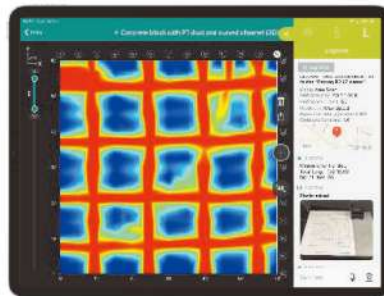


Proceq GPR Live



Structural imaging and inspection with SFCW ground penetrating radar technology



Performance

Superior depth and clarity of data thanks to the unique Swiss Made radar technology with all the frequencies you'll ever need and. Immediate insights with 3D and Augmented Reality.



Versatility

Inspect with ease of use, from the tightest spots, to the tallest walls, to the longest streets. Superior ergonomics to tackle any challenge with comfort, without cables.



Productivity

A mobile app that lets you annotate measurements with voice, photos, and comments. Generate reports and share them instantly. Access your data from anywhere, anytime.

Proceq GPR Live



Software	Proceq GPR Live app
Measurement modes	Line Scan Area Scan (with Flexible Grid)
Review modes	A-scan (incl. envelope) Non-migrated view Migrated view Time-Slice View Basic
Advanced visualization	Time-Slice View Pro 3D View Augmented Reality (AR)
Traceability and reporting	Cloud synchronization Share via URL Cloud-enabled Logbook Cloud-based SEG-Y export Cloud-based report generation
Exporting formats	JPG, PNG, CSV, SEG-Y, HTML
Maximum line scan length	1000 m / 3281 ft
Maximum area scan size	4 x 4 m / 13 x 13 ft

Other	
Display and processing unit	iPad (min. iOS 11, not included)
CPU	64-bit ARM
Screen technology	Liquid or Retina Display
Screen size	7.9" to 12.9"
Screen resolution	Up to 2732 x 2048 pixels / 326 ppi**
Screen type	LED-backlit with multi-touch and IPS technology
Weight	Down to 308.2 g / 0.68 lbs**
Storage capacity	Up to 1TB
Connectivity	Wi-Fi, LTE
Standards and guidelines	AASHTO R 37-04, ACI 228.2R.98, ASTM D4748-10, ASTM D6087-08, ASTM D6432-11
Accessories	AR-enabled grid paper, telescopic rod, device tablet holder (Proceq GP8000)
Availability	Purchase (Basic, Proceq GP8000 only) or subscription (Pro)

Model	Proceq GP8000
Applications	
Congested rebar configurations	
Areas underneath pipes	
Areas close to walls	
Irregular and curved surfaces	
Concrete hit prevention	●
As-built verification	●
Structural investigation	●
Slab thickness measurement	●
Live wire detection	●
Shallow utility locating	●
Pavement scanning	●
Radar technology	Stepped-frequency continuous-wave GPR
Modulated frequency range	200 – 4000 MHz
Depth penetration	80 cm / 31.5 in
Dimensions	22.1 x 18 x 14 cm 8.7 x 7.1 x 5.5 in
Antenna distance to edge	83 mm / 3.27 in
Weight (excl. battery pack)	1.5 kg / 3.3 lbs
Path measurement	±2% accuracy
Adjustable antenna orientation	N/A
Ground clearance	8 mm / 0.32 in
Built-in battery	Removable pack, 8x AA (NiMH), flight-safe
Autonomy	3 h
Connectivity	Wi-Fi (802.11n) to display unit
Certification	FCC, IC, EN ETSI 302 066 / RED
IP rating	IP54

iPad is a trademark of Apple Inc.

*in dry sand; **in dry concrete; ***iPad Mini 2019



PROMAT (HK) Limited 寶時 (香港) 有限公司

☎ : 2661 2392 ☎ : 5196 8860 ✉ : info@promat.hk 🌐 : http://www.promat.hk

