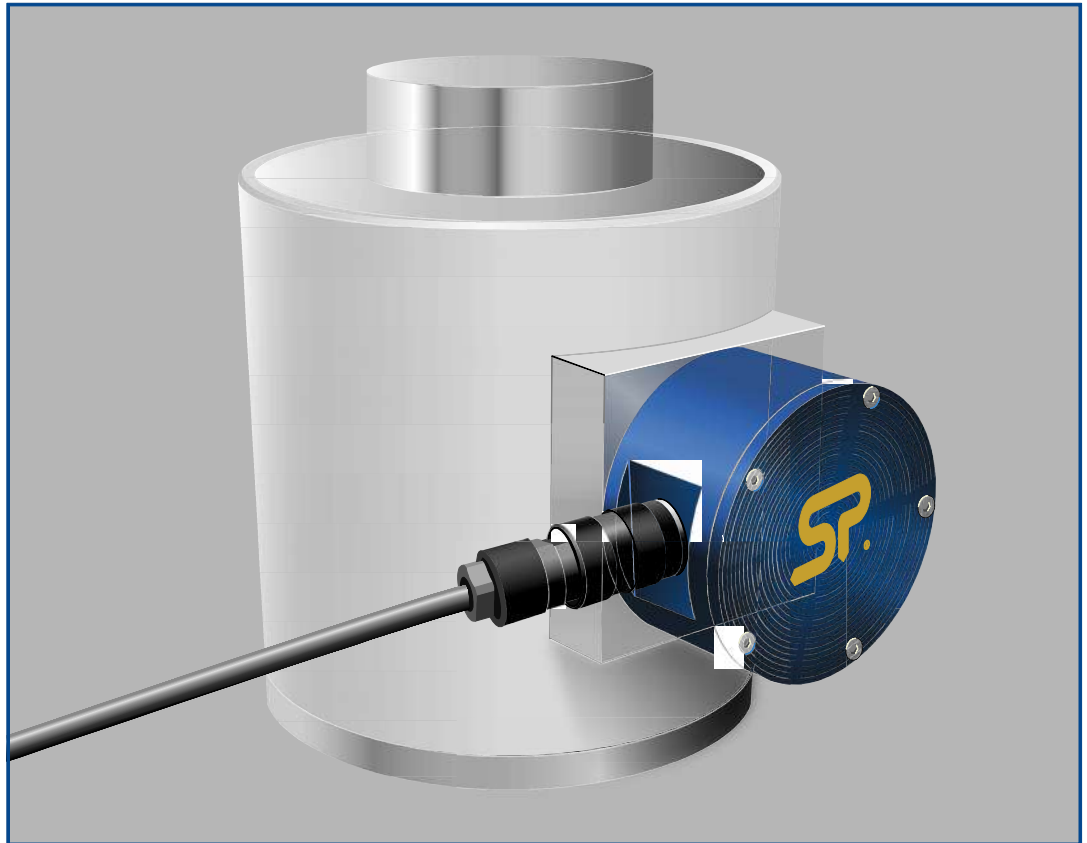




# compression load cell



Manufactured in ranges from 5t to 500t - other capacities available on application.

Straightpoint compression load cells are manufactured to the same stringent standards as all Straightpoint products. The bodies are machined from high grade Stainless Steel, offering excellent strength and anti-corrosion properties.

Supplied with optional loadcap to protect objects being tested.

The compact lightweight design provides ease of use and superior portability, allowing Straightpoint compression load cells to be used in a broad range of industries to include mining, energy, defense, heavy rigging, shipping, and general transportation sectors.

Utilizing the same advanced microprocessor based electronics as all Straightpoint products, Straightpoint's compression load cells benefit from high sampling rates, extreme resistance to industrial level noise and unprecedented stability. This high stability gives this product over 5000 divisions and the highest standard resolution of any high capacity compression load cell on the market today.

Like all Straightpoint products, our compression load cells offer robust construction, advanced electronics, industry leading resolution and accuracy all at a cost-effective, affordable price.

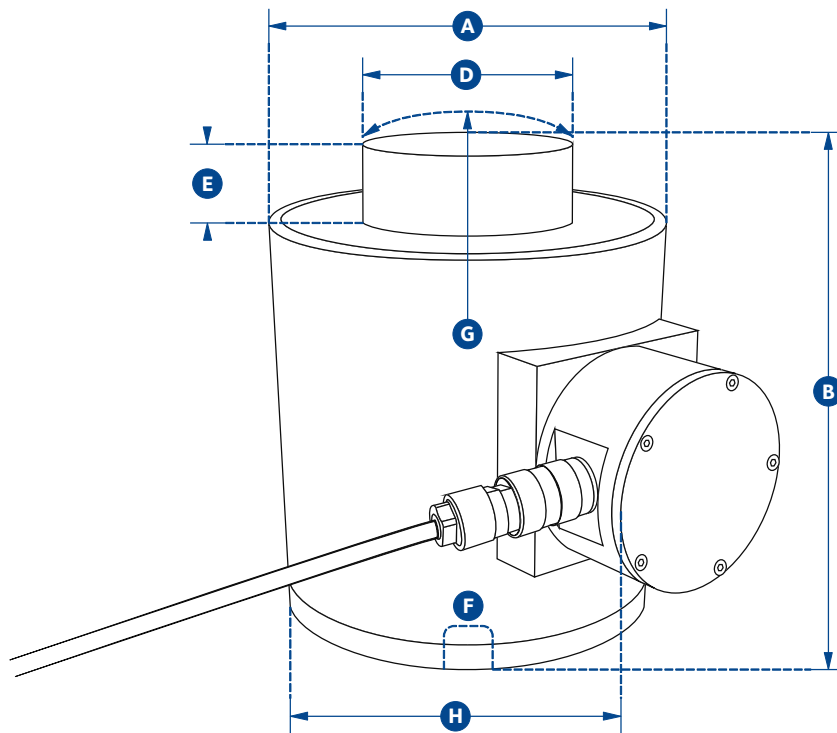


Requires connection to our Handheld Plus (SU3343), our Desktop controller datalogging software package (DCP10M) or our External Amplifier (SA-3420), or other instrumentation.

## Features and benefits:

- Compact Size
- Stainless Steel Construction
- High Accuracy
- Lightweight
- Peak Hold
- Compact Size
- Tare
- Preset Tare
- Audible Set Point Alarm
- Reduced Maintenance Cost
- Unrivalled Resolution
- RS-485 Serial Output

## imperial specifications



## compression load cell

Part Number	NI5TCU	NI10TCU	NI25TCU	NI50TCU	NI100TCU	NI150TCU	NI300TCU	NI500TCU
Capacity	11000lb	22000lb	55000lb	110000lb	220000lb	330000lb	660000lb	1100000lb
Resolution	2lb	5lb	10lb	20lb	100lb	100lb	200lb	500lb
Units	lbs							
Weight	7lb	7lb	7lb	13.64lb	34lb	34lb	143lb	143lb
Safety Factor	3:1							
Operating Temp	14°F to 122°F							
Accuracy	± 0.3 % of applied load							
Protection	NEMA 6							
Dimension A	2.99	2.99	2.99	4.02	5.98	5.98	7.28	7.28
Dimension B	3.27	3.27	3.27	5.00	7.24	7.24	11.81	11.81
Dimension D	1.26	1.26	1.26	2.32	3.15	3.15	6.10	6.10
Dimension E	0.39	0.39	0.39	0.51	1.02	1.02	1.08	1.08
Dimension F	M12 x 1.75	M12 x 1.75	M12 x 1.75	M20 x 2.5	M20 x 2.5	M20 x 2.5	M20 x 2.5	M20 x 2.5
Dimension G	5.98	5.98	5.98	5.98	17.01	17.01	17.01	17.01
Dimension H	3.78	3.78	3.78	6.06	8.03	8.03	9.33	9.33

Capacities from 500t - 2000t (price on application).



**PROMAT (HK) Limited 寶時(香港)有限公司**  
 901 New Trend Center, 704 Prince Edward Road East, SPK, Kln, HK  
 香港九龍新蒲崗太子道東704號新時代商業中心901室  
 TEL: (+852) 2661 2392 FAX: (+852) 2661 2086  
 Email: sales@promat.hk http://www.promat.hk



005