

TAC V+

EN

ORIGINAL INSTRUCTIONS  
HIGH-PERFORMANCE AIR  
PURIFIER



TROTEC

PROMAT (HK) Limited 寶時 (香港) 有限公司

☎ : 2661 2392 ☎ : 5196 8860 ✉ : info@promat.hk 🌐 : http://www.promat.hk



## Table of contents

Notes regarding the instructions .....	2
Safety .....	2
Information about the device .....	5
Transport and storage .....	6
Assembly and installation .....	6
Operation .....	7
Available accessories .....	10
Errors and faults .....	10
Maintenance .....	11
Technical annex .....	15
Disposal .....	25
Declaration of conformity .....	25

## Notes regarding the instructions

### Symbols



#### Warning of electrical voltage

This symbol indicates dangers to the life and health of persons due to electrical voltage.



#### Warning

This signal word indicates a hazard with an average risk level which, if not avoided, can result in serious injury or death.



#### Caution

This signal word indicates a hazard with a low risk level which, if not avoided, can result in minor or moderate injury.

#### Note

This signal word indicates important information (e.g. material damage), but does not indicate hazards.



#### Info

Information marked with this symbol helps you to carry out your tasks quickly and safely.



#### Follow the manual

Information marked with this symbol indicates that the instructions must be observed.



#### Wear safety glasses

Information marked with this symbol indicates that you should wear eye protection.



#### Wear protective gloves

Information marked with this symbol indicates that you should wear protective gloves.



#### Wear a protective mask

Information marked with this symbol indicates that you should wear a protective mask (FFP2 mask).



#### Wear foot protection

Information marked with this symbol indicates that you should wear safety boots.

You can download the current version of the instructions and the EU declaration of conformity via the following link:



TAC V+



<https://hub.trotec.com/?id=44570>

## Safety

**Read this manual carefully before starting or using the device. Always store the manual in the immediate vicinity of the device or its site of use.**



#### Warning

##### **Read all safety warnings and all instructions.**

Failure to follow the warnings and instructions may result in electric shock, fire and/or serious injury.

##### **Save all warnings and instructions for future reference.**

This appliance can be used by children aged from 8 years and above and persons with reduced physical, sensory or mental capabilities or lack of experience and knowledge if they have been given supervision or instruction concerning use of the appliance in a safe way and understand the hazards involved.

Children shall not play with the appliance. Cleaning and user maintenance shall not be made by children without supervision.





### Warning

Children of less than 3 years should be kept away from the device unless continuously supervised.

Children aged from 3 years and less than 8 years shall only switch on/off the appliance provided that it has been placed or installed in its intended normal operating position and they have been given supervision or instruction concerning use of the appliance in a safe way and understand the hazards involved.

Children aged from 3 years and less than 8 years shall not plug in, regulate and clean the appliance or perform user maintenance.

- Do not use the device in potentially explosive rooms or areas and do not install it there.
- Do not use the device in aggressive atmosphere.
- Only put up the device in an upright, stable position on firm ground.
- Let the device dry out after a wet clean. Do not operate it when wet.
- Do not use the device with wet or damp hands.
- Do not expose the device to directly squirting water.
- Never insert any objects or limbs into the device.
- Do not cover or transport the device during operation.
- Do not sit on the device.
- This appliance is not a toy! Keep away from children and animals. Do not leave the device unattended during operation.
- Check accessories and connection parts for possible damage prior to every use of the device. Do not use any defective devices or device parts.
- Ensure that all electric cables outside of the device are protected from damage (e.g. caused by animals). Never use the device if electric cables or the power connection are damaged!
- The electrical connection must correspond to the specifications in chapter Technical data.
- Insert the mains plug into a properly secured mains socket.
- Observe the technical data when selecting extensions to the power cable. Completely unroll the extension cable. Avoid electrical overload.
- Before carrying out maintenance, care or repair work on the device, remove the mains plug from the mains socket. Hold onto the mains plug while doing so.
- Switch the device off and disconnect the power cable from the mains socket when the device is not in use.

- Do not under any circumstances use the device if you detect damages on the mains plug or power cable. If the supply cord is damaged, it must be replaced by the manufacturer, its service agent or similarly qualified persons in order to avoid a hazard. Defective power cables pose a serious health risk!
- When positioning the device, observe the minimum distances from walls and other objects as well as the storage and operating conditions specified in the Technical data chapter.
- Make sure that the air inlet and outlet are not obstructed.
- Make sure that there are no loose items or dirt located in the immediate surroundings of air inlet and air outlet.
- Do not remove any safety signs, stickers or labels from the device. Keep all safety signs, stickers and labels in legible condition.
- Make sure that the suction side is kept free of dirt and loose objects.
- Dispose of replaced filters properly, especially after filtering substances hazardous to health (e.g. asbestos or spray paint mists)
- Never use the device as storage place or footstep.
- Do not move the device when switched on.

### Intended use

Only use the device to clean atmospheric air whilst adhering to the technical data and the safety warnings. The device serves for air purification in highly frequented public areas, such as:

- Supermarkets and DIY stores
- Chemist's shops and pharmacies
- Electronic stores
- Gyms
- Waiting and reception areas
- Trade stands
- Dining rooms
- Emergency camps
- Ships
- Senior citizens home
- Schools
- Conference facilities
- Production halls

Moreover, the device serves for cleaning dust contaminated air in working zones. The device filters viruses, dust and micro fibres of paper and textiles directly at the workplace.

The device may only be used in the commercial sector and in the industry.

### Improper use

- Do not place the device on wet or flooded ground.
- Do not place any objects, e.g. clothing, on the device.
- Do not use the device outdoors.
- Do not use the device to siphon off vapours or fluids.
- Any operation other than as described in this manual is prohibited. Non-observance renders all claims for liability and guarantee null and void.
- Any unauthorised modifications, alterations or structural changes to the device are forbidden.

### Personnel qualifications

People who use this device must:

- be aware of the dangers that occur when working with electrically driven air cleaners.
- have read and understood the instructions, especially the Safety chapter.

### Instructed person

Instructed persons have been informed of the tasks they were entrusted with as well as of potential hazards resulting from inappropriate behaviour. They are allowed to operate and transport the device and perform simple maintenance activities (cleaning the housing, cleaning the fan).

The device is to be maintained and looked after by instructed personnel.

### Residual risks



#### Warning of electrical voltage

Work on the electrical components must only be carried out by an authorised specialist company!



#### Warning of electrical voltage

Before any work on the device, remove the mains plug from the mains socket!

Hold onto the mains plug while pulling the power cable out of the mains socket.



#### Warning

Dangers can occur at the device when it is used by untrained people in an unprofessional or improper way! Observe the personnel qualifications!



#### Warning

The device is not a toy and does not belong in the hands of children.



#### Warning

Risk of suffocation!

Do not leave the packaging lying around. Children may use it as a dangerous toy.

#### Note

Do not operate the device without an air filter inserted into the air inlet!

Without the air filter, the inside of the device will be heavily contaminated. This could reduce the performance and result in damage to the device.

#### Note

Do not use abrasive cleaners or solvents to clean the device.

### Behaviour in the event of an emergency

1. Switch off the device.
2. In an emergency, disconnect the device from the mains feed-in: Hold onto the mains plug while pulling the power cable out of the mains socket.
3. Do not reconnect a defective device to the mains.



## Information about the device

### Device description

The device reduces intensity and time aerosol particles and suspended matter stay in the air, effectively operating directly at the site of installation.

Wherever this flexible high-performance air purifier will be positioned: Depending on the required air change rate, the device will produce a purified and filtered "clean zone area" of up to 320 cubic metres of air.

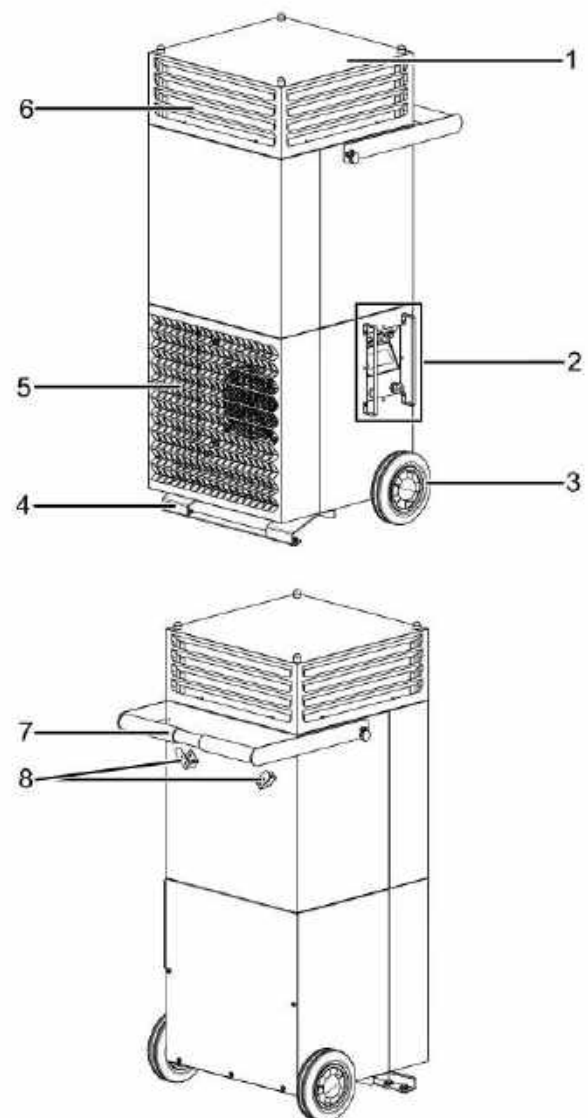
In this treatment zone, the surrounding air will be prevented from germs, fine particulates or other airborne micro particles since the device is able to perform large-volume air intakes of contaminated room air. All thanks to effective H14 HEPA filtration and a flexibly adjustable air circulation for the respective zone that will be free from aerosol particles.

In combination with the integrated F7 prefilter system, the Trotec H14 HEPA filter guarantees to separate airborne germs, viruses and dust, bacteria, spores or micro fibres from paper or textiles.

The special HEPA filter for the device is equipped with a thermal self-regeneration function, automatically inactivating all viruses in regular intervals. This will decontaminate the filter to 100 %.

This way, the device significantly reduces the airborne risk of infection in highly frequented public zones and guarantees dust-free working conditions in contaminated working zones.

### Device depiction



No.	Designation
1	DualDecon blowing-out tower
2	Operating elements
3	Wheel
4	Foot
5	Air inlet with air filter
6	HEPA air filter
7	Transport handle
8	Cable holder

## Transport and storage

### Note

If you store or transport the device improperly, the device may be damaged.

Note the information regarding transport and storage of the device.

### Transport

To make the device easier to transport, it is fitted with a transport handle and two wheels.



### Wear foot protection

Wear suitable foot protection transporting the device.

Risk of injury caused by the foot when setting down the device.

**Before** transporting the device, observe the following:

- Switch the device off.
- Hold onto the mains plug while pulling the power cable out of the mains socket.
- Only wheel the device on a level and smooth surface.
- Remove all packing materials which serve to protect the device during transport.
- Should the device be damaged, please contact the responsible dealer or manufacturer, where the purchase was made.
- Carefully tilt the device. Do not incline more than necessary.
- Carefully set the device back down again.
- The device may only be lifted at the points provided with lifting gear intended for handling. The carrying capacity of the lifting gear must be suitable for the weight of the device (see technical data).

**After** transporting the device, observe the following:

- Set up the device in an upright position after transport.

### Storage

When the device is not being used, observe the following storage conditions:

- Dry and protected from frost and heat
- In an upright position where it is protected from dust and direct sunlight
- With a cover to protect it from invasive dust, if necessary
- Before restarting the device, check the condition of the power cable. If there are doubts as to the sound condition, contact the customer service.
- Have the device checked once a year by an electrically skilled person at any rate.

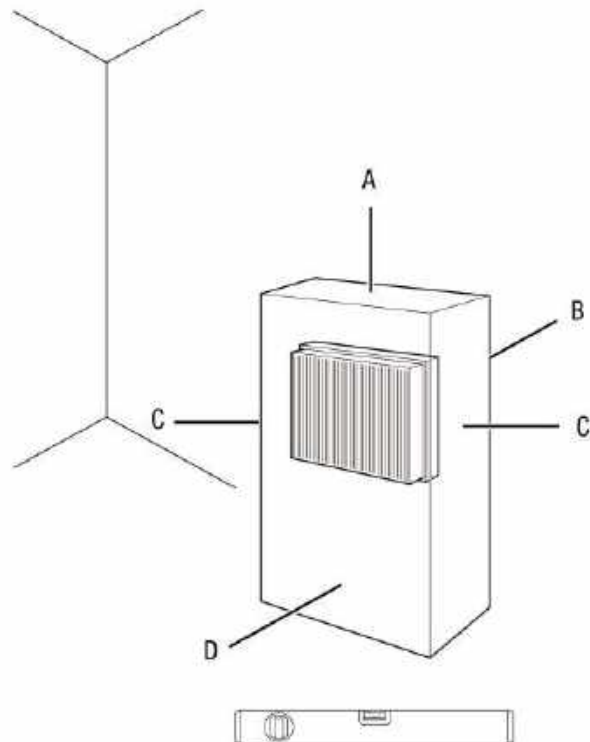
## Assembly and installation

### Scope of delivery

- 1 x Device
- 1 x Air filter prefilter F7
- 1 x HEPA filter
- 1 x Manual

### Start-up

When positioning the device, observe the minimum distance from walls or other objects as described in the Technical data chapter.



- The device may only be used in environments with no excessive formation of dust.
- Set the device up in an upright and stable position.
- Position the device on even and stable ground in a way to prevent it from tipping over.
- When setting up the device, ensure a sufficient distance for air inlet and outlet as well as for operation (see Technical data).
- Make sure that extension cables are completely unrolled.
- When positioning the device, keep a sufficient distance to heat sources.
- Make sure that no curtains or other objects interfere with the air flow.



## Inserting the air filter

### Note

Do not operate the device without an air filter inserted into the air inlet!

Without the air filter, the inside of the device will be heavily contaminated. This could reduce the performance and result in damage to the device.

- Make sure that the air filter is installed before switching the device on.

## Attaching a flowstop shutter

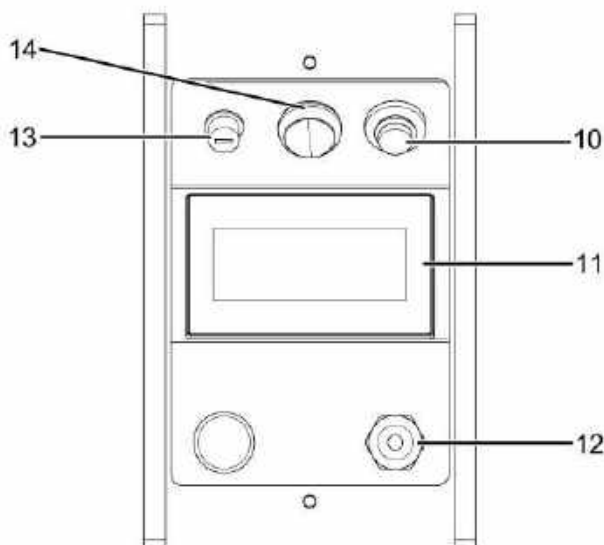
Each of the three flowstop shutters can be attached to one of the four insides of the tower. This prevents up to three sides of the tower from discharging air, e.g. if discharged air is not desired or required on the respective side(s).

## Connecting the power cable

- Insert the mains plug into a properly secured mains power socket.

## Operation

### Operating elements



No.	Designation	Meaning
10	On/off switch	For switching the device on and off
11	Display	Selection of programmes and adjustment of parameters
12	Power cable connection	Power supply of the device
13	Fusing for safety temperature limiter	Triggers in the event of overheating

No.	Designation	Meaning
14	Warning light	<ul style="list-style-type: none"> <li>• Illuminated in green during operation</li> <li>• Illuminated in red in case of a fault</li> <li>• Illuminated in blue during filter regeneration</li> <li>• Flashes yellow filter change required</li> <li>• Flashes green during rundown</li> </ul>

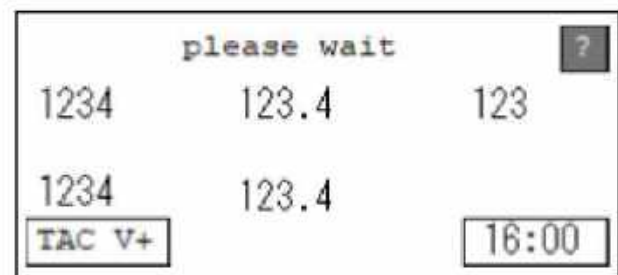
## Release screen lock

The screen lock is activated if no operating element was actuated for 20 seconds. *Locked* will be displayed.

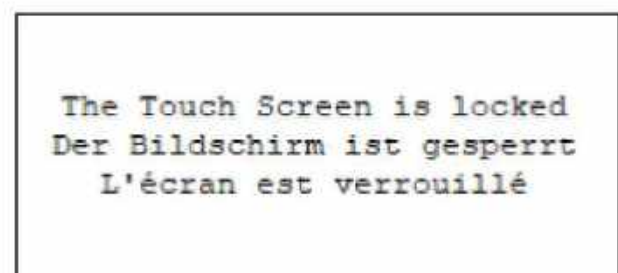


Please proceed as follows to deactivate the screen lock:

1. Press the *Locked* button for 2 seconds.  
⇒ The screen lock is released and *Locked* will no longer be indicated on the display.

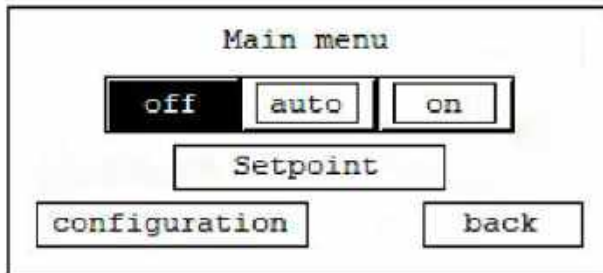


If you touch all other areas on the display apart from the *Locked* button, the following note will be displayed:



### Switching the device on

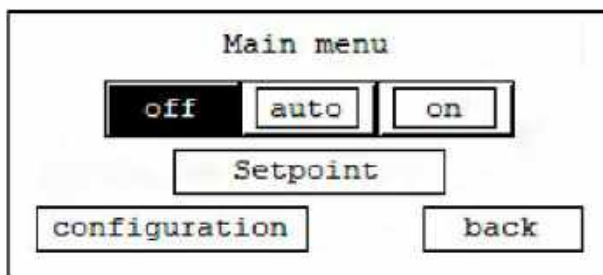
- Once you have completely installed the device as described in the Start-up chapter, you can switch it on.
- Press the *On/off* switch (10).
  - ⇒ The device initialises.
  - ⇒ *Please wait* will be indicated on the display.
  - ⇒ Once the device has been initialised, *Main menu* will appear on the display.



- Start the device by actuating the *On* button.

### Setting the timer

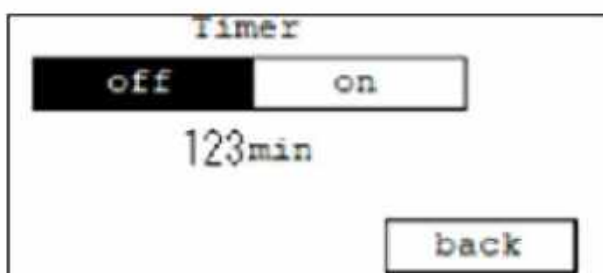
- Press the *Configuration* button in the main selection.



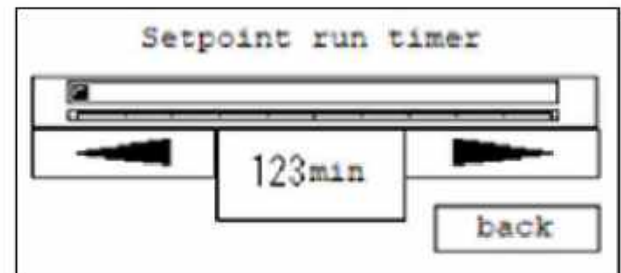
- ⇒ Buttons for further system settings will be indicated on the display.

System	
configuration	Setup Weekly Timer
system settings	
oper.hours	
	back

- Press the *Configuration* button again.
- Select *Timer operation* in the settings.
  - ⇒ *Timer operation* appears on the display.



- Activate the timer by actuating the *On* button.
- Adjust the setpoint for the treatment duration by tapping the time button or by selecting the value using the arrow buttons.



- ⇒ The adaptation will be adopted without any further confirmation.
- ⇒ Once the device is switched on, the timer starts running and will switch off the device after the set time has been expired.

### Weekly timer

Please proceed as follows to set switching times by means of the weekly timer:

- Press the *Configuration* button in the main selection.
  - ⇒ Buttons for further system settings will be indicated on the display.

System	
configuration	Setup Weekly Timer
system settings	
oper.hours	
	back

- Press the *Weekly timer* button.
  - ⇒ The list for the switching times will be indicated on the display.

Command Event List					
MO	12	: 12	StdBy	123.4	123 ▲
TU	12	: 12	StdBy	123.4	123
WE	12	: 12	StdBy	123.4	123 ▼
delete			edit	back	

- Select a switching time by means of the arrow buttons.



4. Press the delete, new or edit buttons to adjust the settings as required.

⇒ Delete: Delete the selected switching time.

Confirmation of deletion

StdBy

MO 12:12 - 23.4 123

delete back

⇒ New: Add a new switching time.

⇒ Edit: Change the selected switching time.

Command Event

Monday 12:12

StandBy Fan

confirm

cancel

5. Optional: Press the *Fan* button to select the fan stage for the selected switching time.

⇒ The *Setpoint fan* screen will be indicated on the display.

Setpoint Fan speed

1 2 3

4 5 max

no change back

6. Press on a setpoint stage in order to select it for the selected switching time.
7. Press *no change* in order to keep the fan stage that has already been set.
8. Press *Back* in order to return back to the *Command Event* screen.

9. Press the indicated switching state (*StandBy* in this example) on the display with the system settings in order to change the switching state.

Command Event

Monday 12:12

StandBy Fan

confirm

cancel

⇒ The possible switching states are indicated on the display.

10. Press the *Standby* or *HEPA filter* switching state to confirm the switching state or to select another.

Command

StandBy HEPA filter

back

11. Press *Back* in order to return back to the display with the system settings.

System

configuration Setup

system settings Weekly

Timer

oper.hours back

12. Press *Back* in order to return back to the main menu.
13. Press the *Auto* button in the main menu to activate the current switching time.
- ⇒ The *On* and *Off* buttons will remain active.

Main menu

off auto on

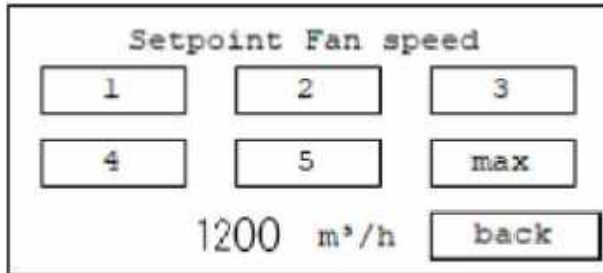
Setpoint

configuration back

### Setting the fan stage

You can set the fan stage for normal mode directly via the main menu. The fan stage settings for normal mode and switching time can be independently adjusted from another.

1. Press the *Setpoints* button in the *main menu*.  
⇒ Buttons for adjusting the fan stages will be indicated on the display.
2. Press the buttons 1, 2, 3, 4, 5 or *max* to select a fan stage.  
⇒ The selected setpoint appears on the display.



3. Press the *Back* button to return to the *main menu*.

### Setpoint stages

Setpoint stage	Value in m³/h
1	600 m³/h
2	800 m³/h
3	1000 m³/h
4	1200 m³/h
5	1400 m³/h
Max.	1600 m³/h

### Switch-off



#### Warning of electrical voltage

Do not touch the mains plug with wet or damp hands.

1. Actuate the *On/off* switch (10).
2. Switch the device off by removing the mains plug from the mains socket.

### Shutdown

1. Proceed as described in the Switch-off section.
2. Clean the device according to the Maintenance chapter.
3. Store the device according to the Storage chapter.

### Available accessories



#### Warning

Only use accessories and additional equipment specified in the instructions. Using insertion tools or accessories other than those specified in the instructions may cause a risk of injury.



#### Warning

In order to prevent a potential fire hazard, only use the original Trotec **heat-resistant HEPA H14 filter**.

Designation	Article number
Heat-resistant H14 HEPA filter	7.160.000.106
Prefilter F7	7.160.000.449
Silencer sound protection	6.100.007.062
Attachment hood for hose connection	6.100.007.061
Flowstop shutter	6.100.007.063

### Errors and faults

The device has been checked for proper functioning several times during production. If malfunctions occur nonetheless, check the device according to the following list.

#### The device does not start:

- Check the power connection.
- Check the power cable and mains plug for damage.
- Check the on-site fusing.
- Check whether the device is standing upright and on level ground. The tilt protection may have been tripped owing to the fact that the device was knocked over. Always put up the device in an upright position on a suitable, sufficiently dimensioned surface.
- The safety thermostat might have tripped due to overheating. Switch the device off and let it cool down for at least 10 minutes.
- Wait for 10 minutes before restarting the device. If the device is not starting, have the electrics checked by a specialist company or by Trotec.
- The overheating protection may have been tripped. Have a specialist electrical company or Trotec check the electrics and replace the overheating protection.

#### The device is loud or vibrates:

- Check whether the device is set up in a stable and upright position.



### The device gets very warm, is loud or is losing performance:

- Check the air inlets and air filters for dirt. Remove external dirt.
- From the outside, check the device for dirt (see chapter Maintenance). If the inside of the device is dirty, have it cleaned by a specialist company or by Trotec.

### The device gives off an unpleasant odour:

- Smoke, e.g. dense tobacco smoke, odours and contaminations may be in the air. Ventilate the room.

### Your device still does not operate correctly after these checks?

Please contact the customer service. If necessary, bring the device to an authorised specialist electrical company or to Trotec for repair.

### Error messages

Faults are indicated by the warning light (14) lighting up. Additionally, the following error messages can be indicated on the display (11):

Message	Cause	Troubleshooting
Volumetric flow rate too low	Covered or blocked inlet or outlet or defective fan	Remove blockages
Sensor fault	One of the temperature sensors is defective	Switch the device off and check the temperature sensors
Filter dirty (Warning light (14) flashes)	The air filter might be contaminated	Replace the filter
Overheating protection motor	The device is overheating	Disconnect the device from the mains and allow to cool down

## Maintenance

The device is designed for long hours of operation with minimum maintenance effort. Safe operation of the device requires all built-in components, especially the safety temperature limiter (STB), to be checked and cleaned after 12 months at the latest or after 4000 operating hours as well as all damaged components to be replaced.

In order to benefit from an optimal operation of the TAC V+, we recommend using our maintenance service once a year. The maintenance service consists of changing the filter, cleaning and disinfecting the interior and exterior of the device, checking functions and all safety devices and, if required, updating the control software. This way you ensure your device to maintain a perfectly clean condition while reliably filtering and decontaminating viruses and aerosols from the room air for many ongoing years – without you needing to worry about it anymore. We'll get in touch with you regarding your service intervals. For an all-round safe operation, we recommend concluding a maintenance agreement. Please contact our customer service.

## Maintenance intervals

Maintenance and care interval	before every start-up	as needed	at least every 2 weeks	at least every 4 weeks	at least every 6 months	at least annually
Check air filter, air inlets and outlets for dirt and foreign objects and clean if necessary	X					
Clean the exterior		X				X
Visually check the inside of the device for dirt		X		X		
Replace the H14 filter						X
Replace the H7 filter					X	
Check for damage	X					
Checking the safety temperature limiter						X
Check attachment screws		X				X
Test run						X

## Maintenance and care log

Device type: .....

Device number: .....

Maintenance and care interval	1	2	3	4	5	6	7	8	9	10	11	12	13	14	15	16
Check air, filter, air inlets and outlets for dirt and foreign objects and clean if necessary																
Clean the exterior																
Visually check the inside of the device for dirt																
Replace the H14 filter																
Replace the H7 filter																
Check for damage																
Check attachment screws																
Test run																
Remarks:																

1. Date: ..... Signature: .....	2. Date: ..... Signature: .....	3. Date: ..... Signature: .....	4. Date: ..... Signature: .....
5. Date: ..... Signature: .....	6. Date: ..... Signature: .....	7. Date: ..... Signature: .....	8. Date: ..... Signature: .....
9. Date: ..... Signature: .....	10. Date: ..... Signature: .....	11. Date: ..... Signature: .....	12. Date: ..... Signature: .....
13. Date: ..... Signature: .....	14. Date: ..... Signature: .....	15. Date: ..... Signature: .....	16. Date: ..... Signature: .....



## Activities required before starting maintenance



### Warning of electrical voltage

Do not touch the mains plug with wet or damp hands.

- Switch the device off.
- Hold onto the mains plug while pulling the power cable out of the mains socket.



### Warning of electrical voltage

Tasks which require the housing to be opened must only be carried out by authorised specialist companies or by Trotec.



### Warning

Observe local provisions and regulations on hygiene when cleaning. Protect yourself during cleaning and maintenance work with suitable protective equipment (e.g. protective mask, protective glasses and gloves).



### Note

Prior to cleaning the interior, protect the fan and further electrical components from water ingress with appropriate means.

### Note

In case of maintenance pending, a respective message will be indicated on the display.

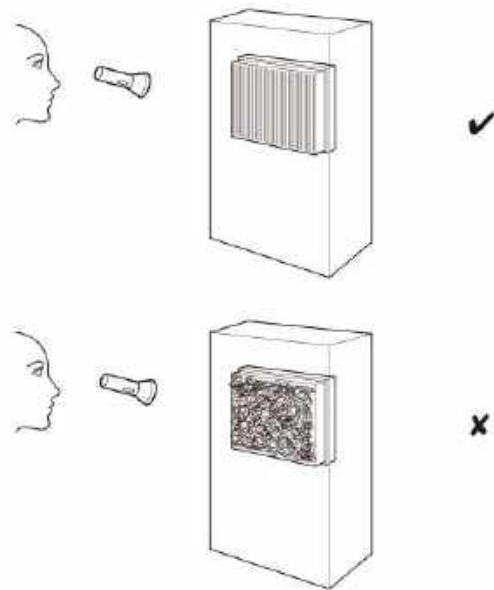
## Cleaning the housing

Clean the housing with a soft, damp and lint-free cloth. Make sure that no moisture enters the housing. Protect electrical components from moisture. Do not use any aggressive cleaning agents such as cleaning sprays, solvents, alcohol-based or abrasive cleaners to dampen the cloth.

## Visual inspection of the inside of the device for dirt

1. Remove the air filters.
2. Use a torch to illuminate the openings of the device.
3. Check the inside of the device for dirt.
4. If you see a thick layer of dust, clean the inside of the device with a vacuum cleaner.

5. Reinsert the air filters.



## Filter change



### Warning

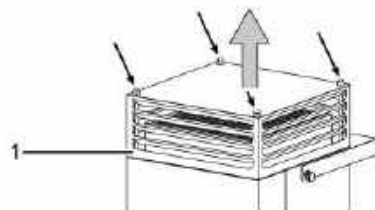
Use an FFP2 mask and disposable gloves when changing the filter.



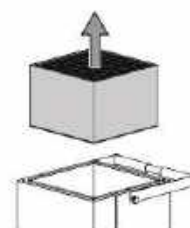
The filter change intervals depend on the degree of air pollution and the filter quality. Dirty filters impair the performance ability of the device. If the filter is contaminated to a certain degree, a warning will be indicated on the display and a new filter has to be inserted.

Please proceed as follows to change the H14 HEPA filter:

- ✓ Automatic thermal self-regeneration is completed.
- 1. Using a screwdriver, remove the protective caps of the 4 screws from the top of the device.
- 2. Remove all 4 screws.
- 3. Take off the blowing-out tower (1) from the device and carefully put aside.



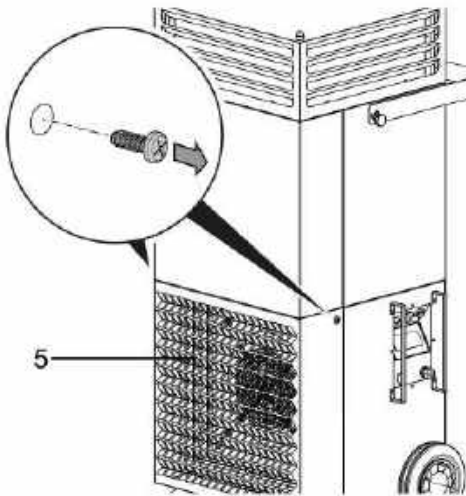
4. Remove the H14 HEPA filter from the device.



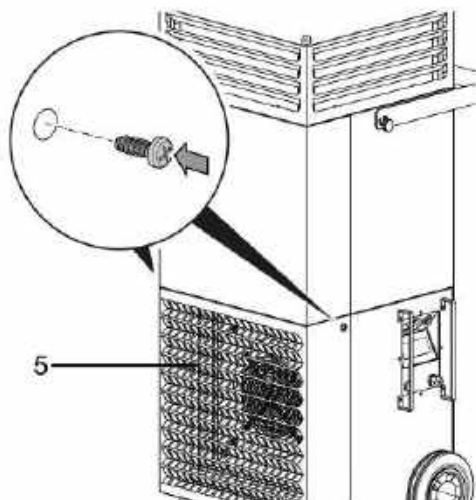
5. Put the worn H14 HEPA filter in a bag and dispose of it in the household waste.
6. Thoroughly clean the housing from the inside and outside (see Cleaning the housing).
7. Install a new HEPA air filter.
8. Fit the blowing-out tower back on the device.
9. Fasten the blowing-out tower by means of the screws.
10. Put the protective caps back on the screws.

Please proceed as follows to change the F7 filter:

1. Loosen the screws on the air inlet on both sides of the device and remove the air inlet with the air filter (5) by folding the holder out towards the front.

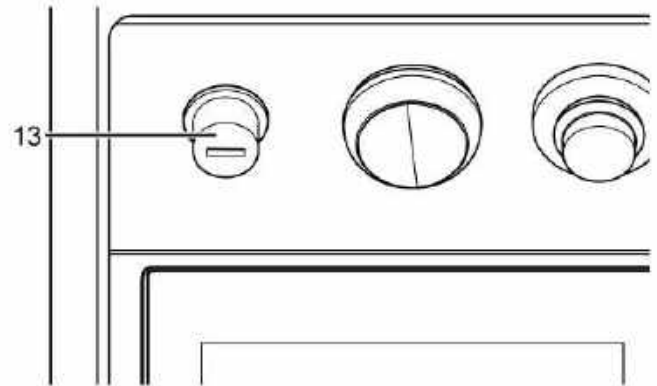


2. Remove the filter from the holder.
3. Insert the new air filter into the device.
4. Put the air inlet back on the device and tighten the screws on both sides of the device.



### Checking the safety temperature limiter

If the safety temperature limiter (13) has triggered, allow the device to cool down. Then twist off the protective cap and press the fusing into the device until it locks into place.





## Technical annex

### Technical data

Parameter	Value
<b>Model</b>	<b>TAC V+</b>
Article number	1.580.000.150
Ventilation performance without filter	2500 m <sup>3</sup> /h
Amount of exhaust air with HEPA H14 filter	1600 m <sup>3</sup> /h *
Clean zone area with 6 air exchanges/hour	266 m <sup>3</sup>
Clean zone area with 10 air exchanges/hour	160 m <sup>3</sup>
Clean zone area with 15 air exchanges/hour	107 m <sup>3</sup>
Clean zone area with 20 air exchanges/hour	80 m <sup>3</sup>
Clean zone area with 25 air exchanges/hour	64 m <sup>3</sup>
Prefilter for air filter	F7
Heating capacity for decontaminating the H14 HEPA filter	2.5 kW
Input voltage	220–240 V, 50 / 60 Hz
Type of protection	IP23
Nominal current	12.9 A
Fusing	13 A
Sound level (at a distance of 1 m)	54 dB(A)
Dimensions (length x width x height)	690 x 610 x 1300 mm
Minimum distance to walls and other objects:	top (A): 50 cm rear (B): 50 cm sides (C): 50 cm front (D): 50 cm
Weight	78 kg

\* H14 filter efficiency class certified in accordance with DIN EN 1822, H14 class  $\leq 1200$  m<sup>3</sup>/h





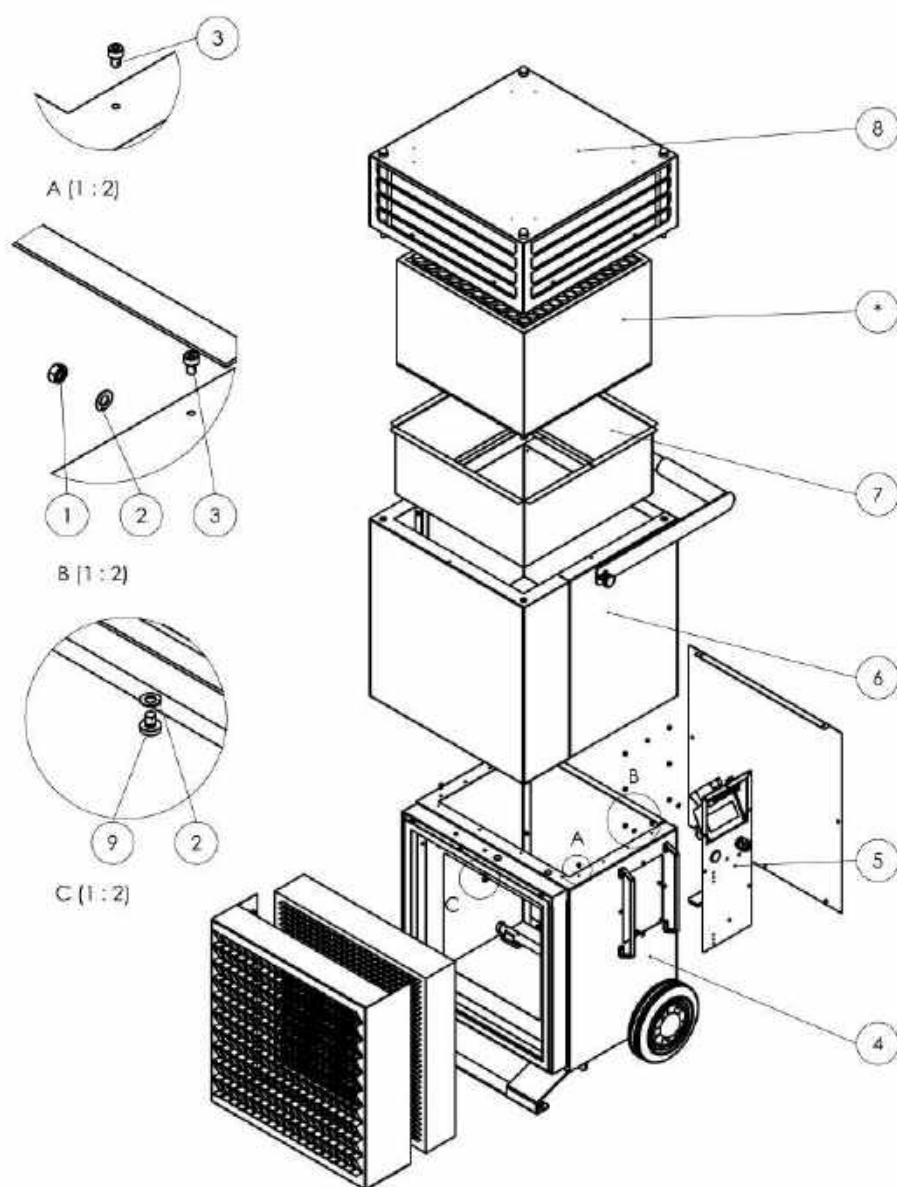


## Spare parts drawing and list



### Info

The position numbers of the spare parts differ from those describing the positions of the components mentioned in these instructions.



No.	Spare part	No.	Spare part
1	Hexagon nut (DIN 934 – M 5)	6	Top housing
2	Detent-edged washer (SKK5, Ø5.3xØ10x1.25)	7	Filter case
3	Cylinder head screw (DIN 912 – M 4 x 6)	8	Air flap cover
4	Bottom housing	9	Screw (Liko cross recessed raised pan head screw, DIN 7985 – M 5 x 6)
5	Electrical plate		

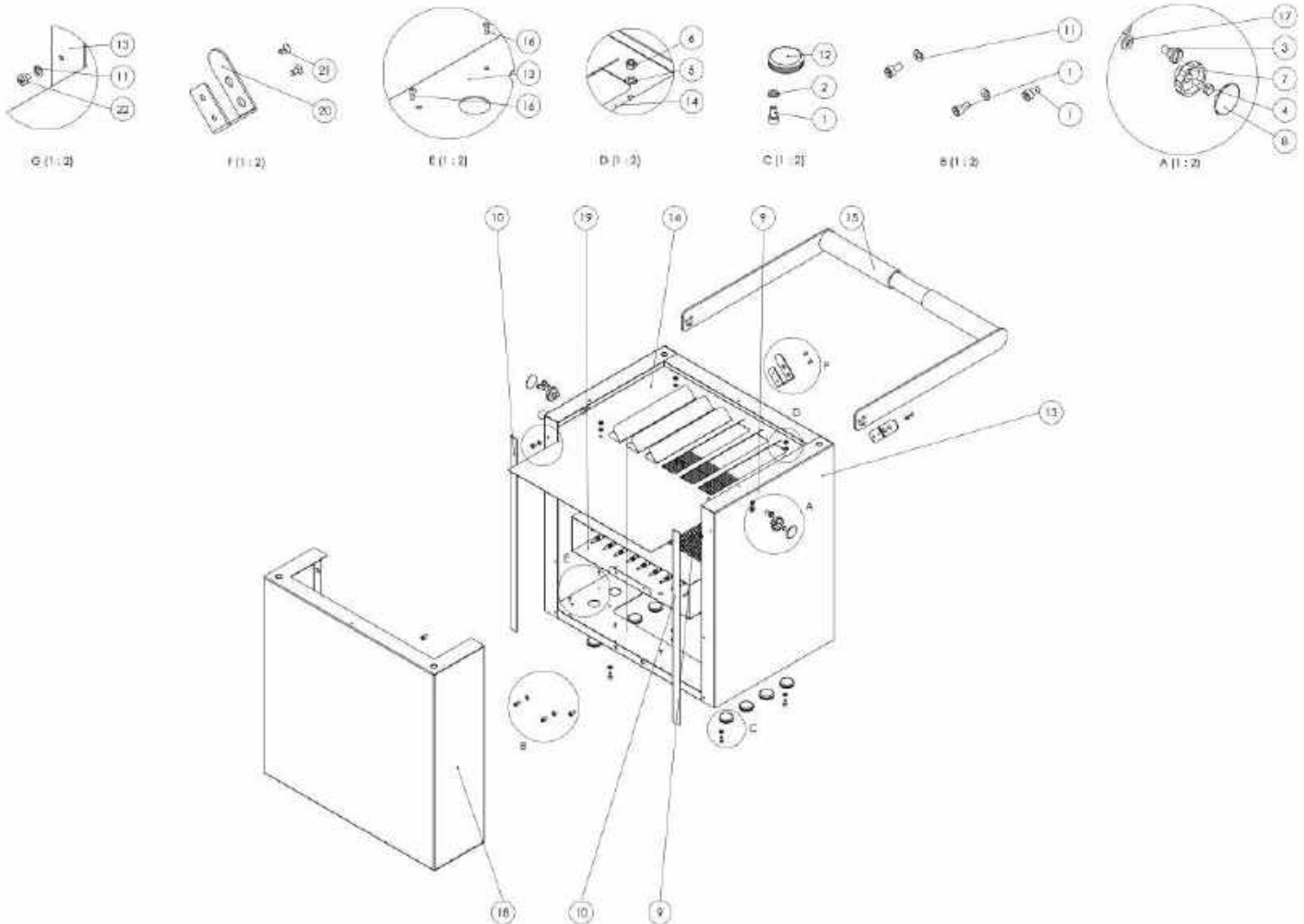


## Top housing



### Info

The position numbers of the spare parts differ from those describing the positions of the components mentioned in these instructions.



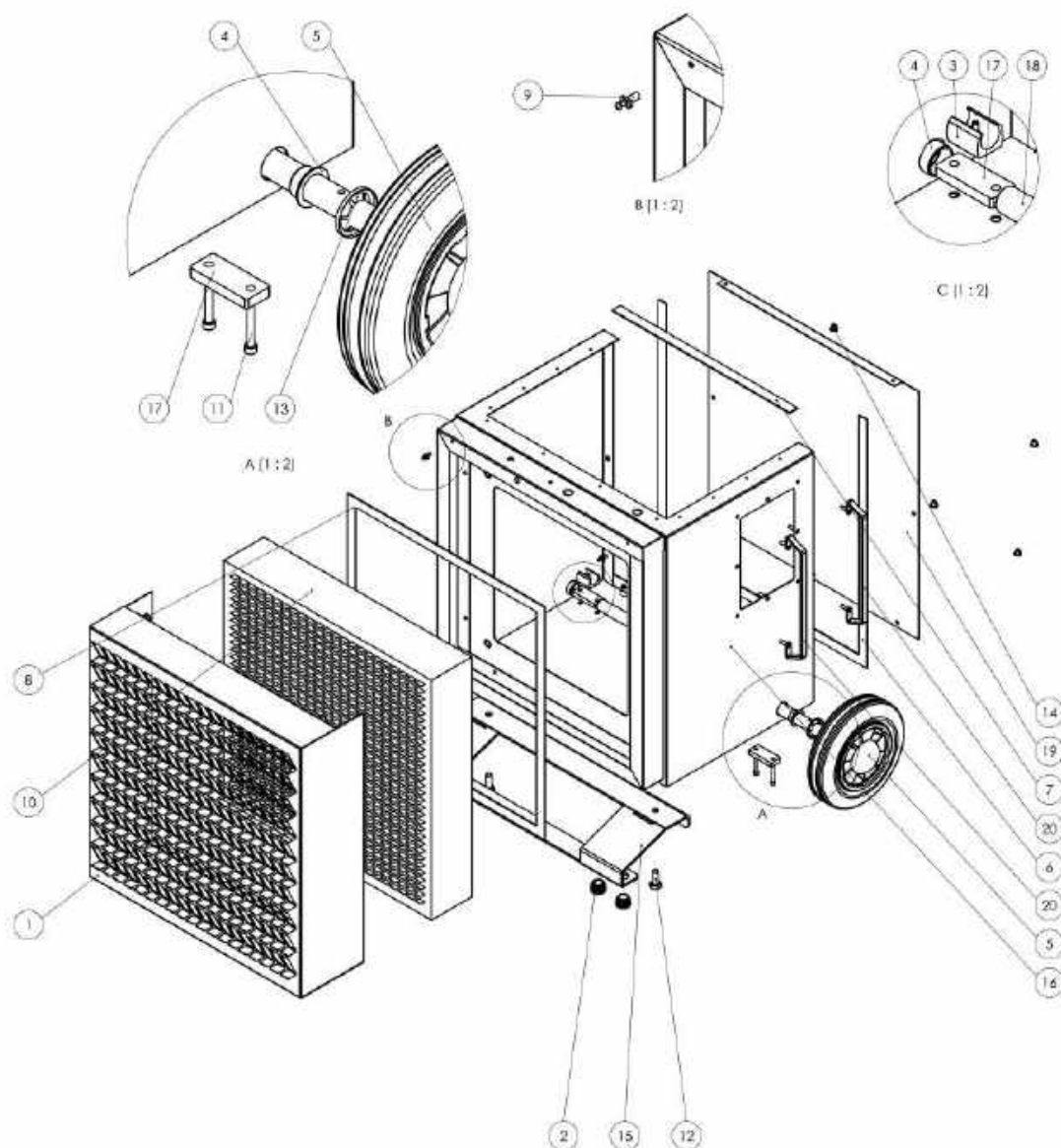
No.	Spare part	No.	Spare part
1	Cylinder head screw (DIN 912 – M 5 x 10)	12	Sealing plug (Ø30xØ25.5xØ20.5x1.5xL8mm)
2	Countersunk serrated lock washer (DIN 6798 – A Ø5.3)	13	Housing
3	Slotted pan head screw (with shoulder, DIN 923 M6 x 5 VZ)	14	Finger protection
4	Allen screw (DIN 933 – M 5 x 16 VA)	15	Handle
5	Washer (DIN 125 – A Ø5.3)	16	Rivet
6	Hexagon nut (DIN 934 – M 5)	17	Washer (DIN 125 – A Ø6.4)
7	Knob (M5 bottom star)	18	Front panel
8	Knob (M5 yellow star cap)	19	Heating
9	Finger protection	20	Cable holder
10	Self-adhesive needle felt (w/h=19/2mm, l=1830mm)	21	Hexagon socket countersunk screw (DIN 7991 – M 4 x 8, black)
11	Detent-edged washer (SKK5, Ø5.3xØ10x1.25)	22	Screw (Liko cross recessed raised pan head screw, DIN 7985 – M 5 x 6)

## Bottom housing



### Info

The position numbers of the spare parts differ from those describing the positions of the components mentioned in these instructions.



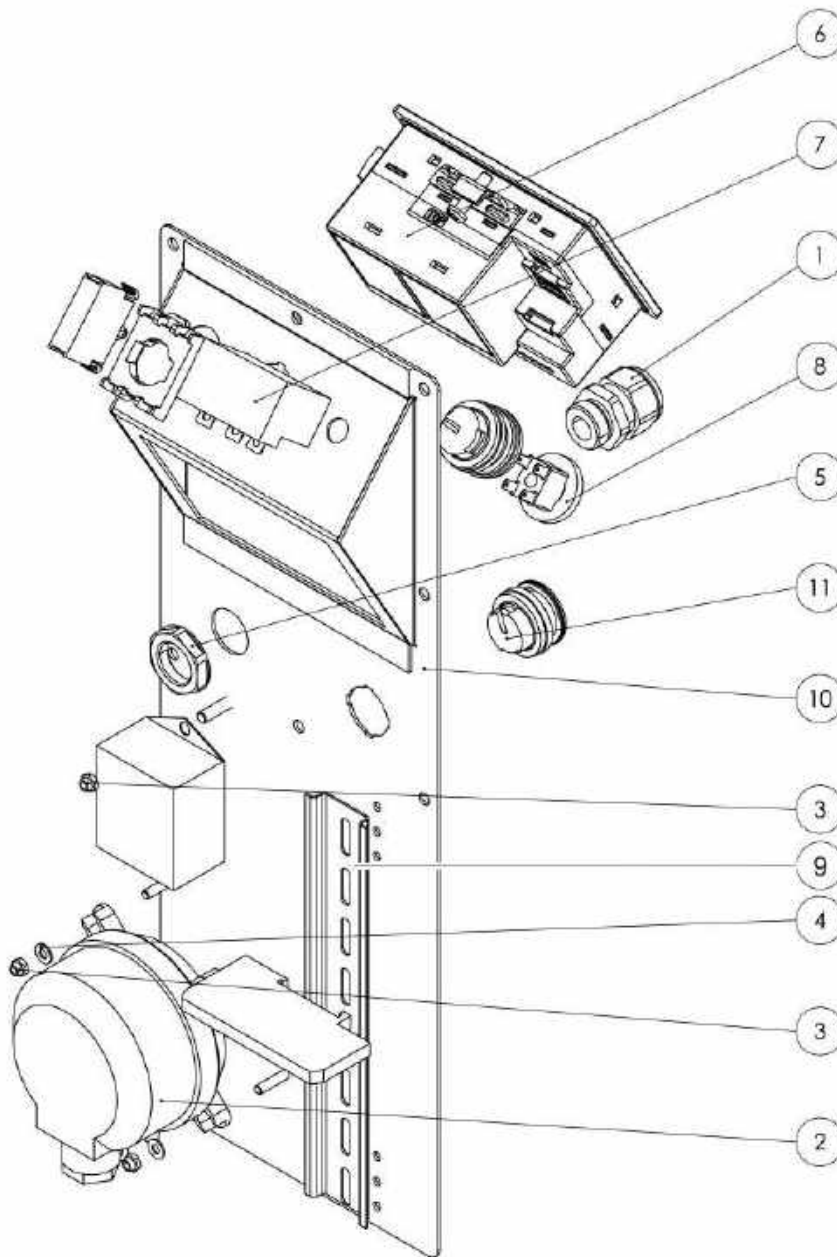
No.	Spare part	No.	Spare part
1	Filter box	11	Cylinder head screw (DIN 912 – M 5 x 40)
2	Finned plug (Ø25xØ19xL11.5x5, medium grey, matt)	12	Hexagon screw (DIN 933 – M 10 x 25)
3	Saddle feet	13	Starlock washer (Ø20)
4	Plain bearing	14	Allen screw (Liko ISO 7380 – M 6 x 8)
5	Wheel	15	Housing support
6	Self-adhesive needle felt (w/h=19/2mm, l=1500mm)	16	Bottom housing
7	Self-adhesive needle felt (w/h=19/2mm, l=423mm)	17	Support plate
8	Self-adhesive needle felt (w/h=19/2mm, l=1830mm)	18	Axle
9	Closure plug	19	Cover for maintenance work
10	F7 air filter	20	Protective bar

## Operating panel



### Info

The position numbers of the spare parts differ from those describing the positions of the components mentioned in these instructions.



No.	Spare part	No.	Spare part
1	Cable bushing	7	Temperature limiter
2	Differential pressure switch	8	Switch
3	Hexagon nut (self-locking, DIN 985 – M4 VA)	9	DIN rail
4	Washer (DIN 125 – A Ø4.3 VA)	10	Control unit
5	Nut (M20x1.5 UL black)	11	Dummy plug
6	Control		USB flash drive with application software

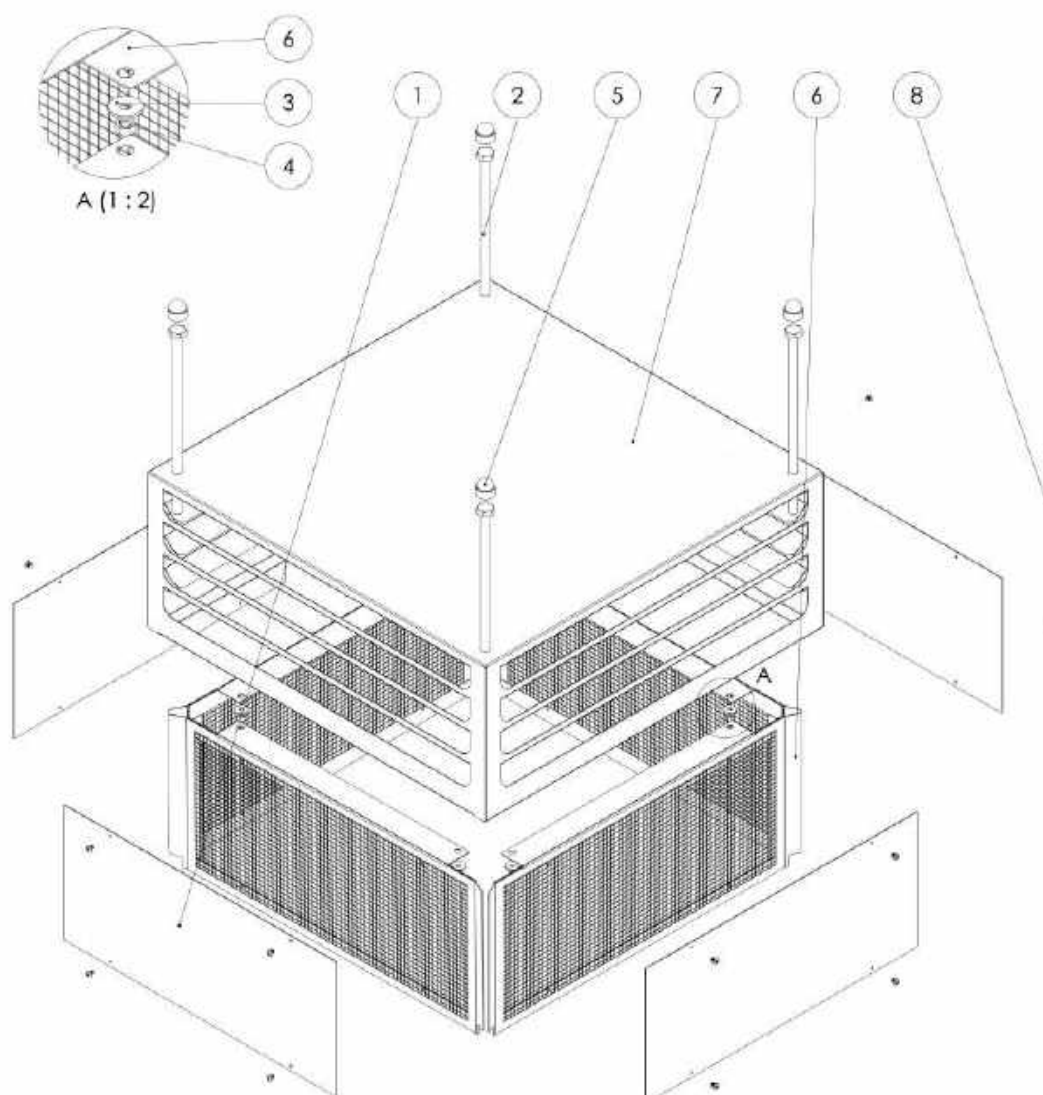


## Air flap cover



### Info

The position numbers of the spare parts differ from those describing the positions of the components mentioned in these instructions.



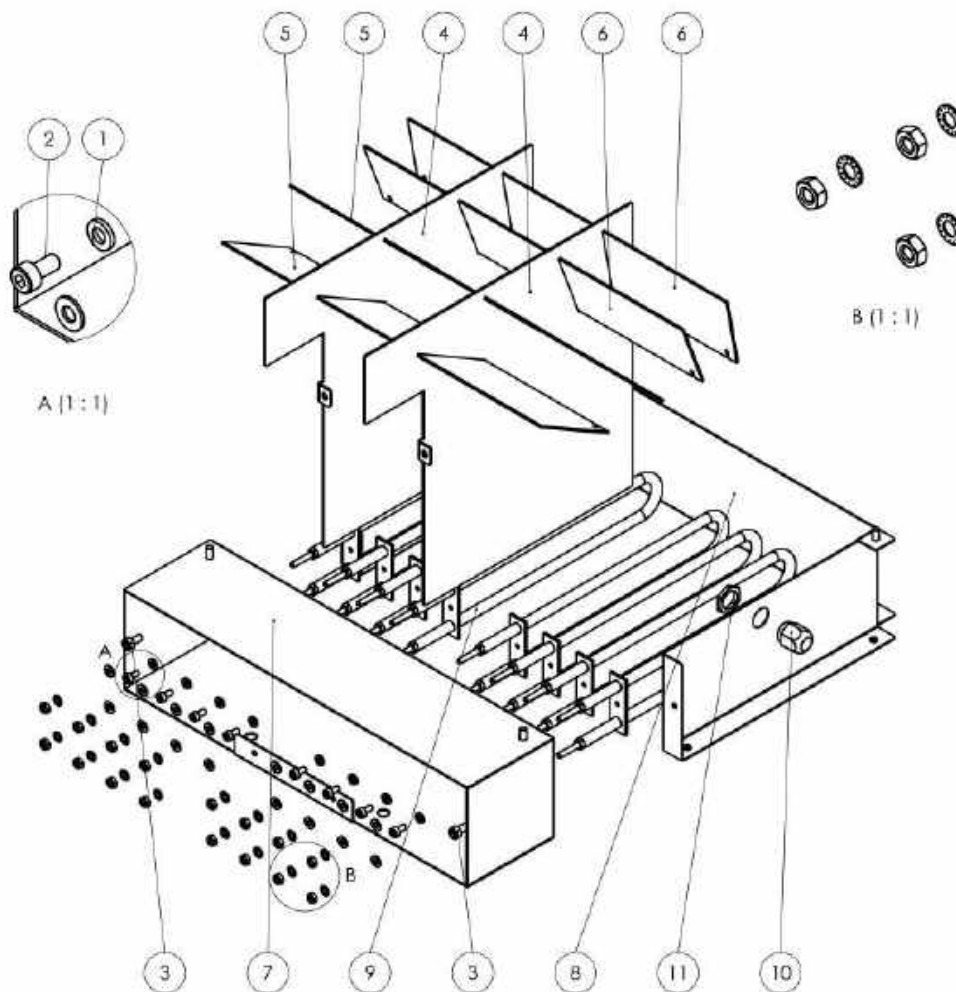
No.	Spare part	No.	Spare part
1	Cover	5	Protective cap (M10 SW17 plastics, black)
2	Hexagon screw (with shaft, DIN 931 – M 10 x 230)	6	Protective plate
3	Washer (DIN 9021 – Ø5.3xØ15x1.2)	7	Air flap cover
4	Hexagon nut (DIN 934 – M 5)	8	Screw (Liko Pan head tapping screw, form C, DIN 7981 – 3.9 x 6.59)

## Heating



### Info

The position numbers of the spare parts differ from those describing the positions of the components mentioned in these instructions.



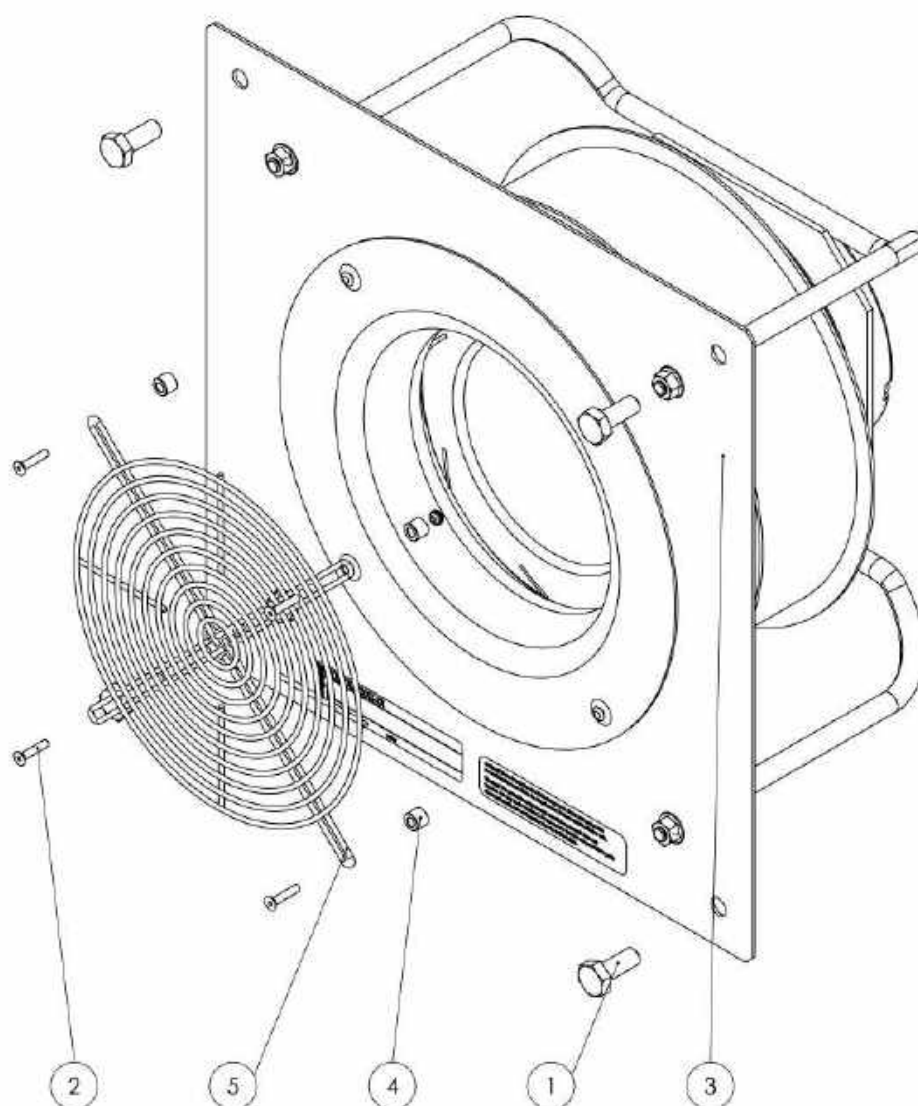
No.	Spare part	No.	Spare part
1	Detent-edged washer (SKK4, Ø4.3xØ8.2 x 1.2)	7	Heating plate
2	Screw (DIN 912 – M4 x 8)	8	Housing
3	Screw (DIN 912 – M 5 x 10)	9	Heating rod
4	Separating plate	10	Cable bushing
5	Adjusting plate	11	Nut (M16 x 1.5)
6	Adjusting plate		

## Ventilation



### Info

The position numbers of the spare parts differ from those describing the positions of the components mentioned in these instructions.



No.	Spare part	No.	Spare part
1	Hexagon screw (DIN 933 – M 10 x 25)	4	Spacer sleeve
2	Hexagon socket countersunk head cap screw (DIN 7991 – M 4 x 20)	5	Finger protection
3	Fan		



## Disposal



The icon with the crossed-out waste bin on waste electrical or electronic equipment stipulates that this equipment must not be disposed of with the household waste at the end of its life. You will find collection points for free return of waste electrical and electronic equipment in your vicinity. The addresses can be obtained from your municipality or local administration. For further return options provided by us please refer to our website <https://de.trotec.com/shop/>.

The separate collection of waste electrical and electronic equipment aims to enable the re-use, recycling and other forms of recovery of waste equipment as well as to prevent negative effects for the environment and human health caused by the disposal of hazardous substances potentially contained in the equipment.

## Declaration of conformity

The text below sets out the contents of the declaration of conformity. The signed declaration of conformity can be found at <https://hub.trotec.com/?id=44570>.

### Declaration of conformity

in accordance with the EC Machinery Directive 2006/42/EC,  
Annex II, Part 1, Section A

Herewith, we – Trotec GmbH – declare that the machinery designated below was developed, constructed and produced in compliance with the requirements of the EC Machinery Directive in the version 2006/42/EC.

**Product model / Product:** TAC V+

**Product type:** high-performance air purifier

**Year of manufacture as of:** 2020

### Relevant EU directives:

- 2011/65/EU: 01/07/ 2011
- 2014/30/EU: 29/03/2014

### Applied harmonised standards:

- EN ISO 12100:2010
- EN ISO 13849-1:2015
- EN ISO 13857:2008
- EN 55011:2009
- EN 60204-1:2018
- EN 60335-1:2012+A11:2014+A13:2017
- EN 60335-1:2012+A11:2014
- EN 60335-2-30:2009+Cor.:2010+A11:2012
- EN 60335-2-65:2003
- EN 61000-6-1:2007
- EN 61000-6-3:2007+A11:2011+AC:2012

### Applied national standards and technical specifications:

- EN ISO 14118:2018

### Manufacturer and name of the authorised representative of the technical documentation:

Trotec GmbH  
Grebbeener Straße 7, D-52525 Heinsberg  
Phone: +49 2452 962-400  
E-mail: [info@trotec.de](mailto:info@trotec.de)

Place and date of issue:

Heinsberg, 06.05.2020

Detlef von der Lieck, Managing Director