



# ThermaData® WiFi Pharm

for high accuracy wireless monitoring

- external sensor(s) designed to simulate fridge contents temperature
- FREE software with NO ongoing or subscription charges
- access recorded data worldwide via internet
- high/low alerts via email & SMS

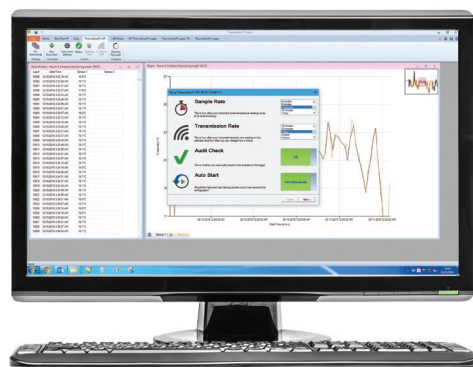


A new addition to our ThermaData WiFi range of data loggers, the ThermaData WiFi with Pharm probe(s) are a battery powered, cost-effective, temperature monitoring system that remotely records storage and transportation temperatures of perishable items such as food, vaccines and medication.

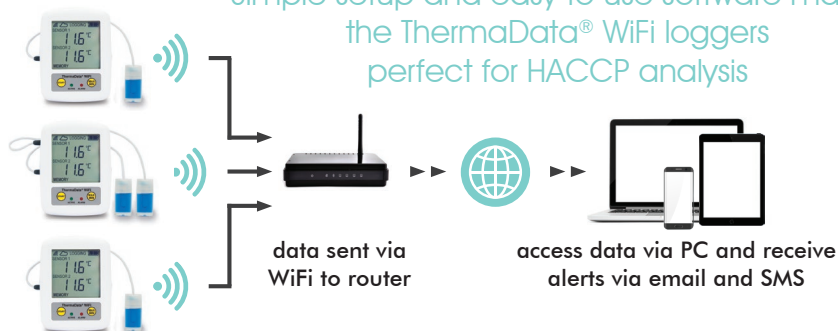
Each unit has an intuitive LCD displaying; temperature, WiFi connection status, max/min recorded temperatures, alarm status and battery life. Simple to set up, the logger once up and running will transmit recorded data to a WiFi router connected to the internet which can then be accessed and viewed from a PC, laptop or tablet anywhere in the world.

At programmable intervals, the loggers will record temperature from both sensors, recording up to a maximum of 18000 readings (9000 from each sensor). Each logger incorporates a red and green LED. The flashing green LED indicates that the logger is active/ logging and the flashing red LED indicates that the customised preset alarms have been exceeded. Each logger communicates directly to the WiFi router at set intervals to push data through the internet into ThermaData Studio. The information is available to be analysed and exported into a report format. Each unit is supplied with a USB lead, wall bracket and FREE ThermaData Studio software (licence free) available to download from our website.

Each thermistor probe is encased in a sealed bottle and incorporates a one metre PUR/PVC fixed lead. To begin monitoring, simply unscrew and top up with Glycol solution (50ml bottle supplied). **Please Note:** Model TD1F is supplied with one external remote probe and an internal sensor. Model TD2F is supplied with two external remote probes. For more information contact our sales office.



Simple setup and easy to use software makes the ThermaData® WiFi loggers perfect for HACCP analysis



order code	description	£ each
298-011-PHM	model TD1F c/w Pharm probe	100.00
298-111-PHM	model TD2F c/w Pharm probes	125.00
830-880	protective silicone boot - black	12.00
816-035	replacement Glycol solution - 50ml	7.50
inclusive of thermistor probes & USB lead		



specification	model TD1F	model TD2F
range - internal	0 to 50 °C	n/a
range - external	-40 to 70 °C	-40 to 70 °C
resolution	0.1 °C/°F	
accuracy	±0.5 °C	
memory	2 x 9000 readings	
sample rate	0.1 to 330 minutes	
battery & life	2 x 1.5 volt AA - approx. 12 months	
display	12 mm LCD/2 LED's	
dimensions	29 x 72.5 x 96 mm	
weight	165 grams	
FREE traceable certificate of calibration included		

Please note: WiFi routers have a range of 100 metres depending on the make, model, capabilities and setup of the router. Environmental conditions may also affect the signal strength.



PROMAT (HK) Limited 寶時 (香港) 有限公司

☎ : 2661 2392 ☎ : 5196 8860 ✉ : info@promat.hk 🌐 : http://www.promat.hk

